



WISCONSIN
SAFETY
COUNCIL

84TH

ANNUAL CONFERENCE

April 13-15, 2026

Kalahari Resort & Conference Center | Wisconsin Dells

PRESENTED BY **AON**

PROGRAM BOOKLET
SPONSORED BY



SPHERION[®]
STAFFING & RECRUITING



PRESENTED BY **AON**

Table of Contents

- 2 Keynote Speakers
- 3 Kalahari Map
- 5 Conference App
- 6-7 Day at a Glance
- 8-10 Educational Session Listings
- 11 Conference Sponsors
- 14 Map of Expo Hall
- 14-15 Exhibitor Booth Assignments
- 16-23 Exhibitor Listing
- 24-27 Wisconsin Workplace Safety Awards
- 30 WSC Training Calendar
- 31 2027 Conference Dates

MAIN STAGE

PRESENTED BY



PROGRAM BOOKLET

PRESENTED BY



SPHERION
STAFFING & RECRUITING

Tuesday, April 14, 2026 | 7:30 – 9:00 a.m.

“Developing Leaders Who Grow A Winning Culture”



Steve Jones

Professional Leadership Coach, Keynote Speaker, Consultant and Best-selling Author

Culture either happens by design or default. Steve Jones will be discussing how to intentionally create and grow a “winning” culture by developing leaders within your organization. Steve will break down the power of connection, mindset, trust, and servant leadership into actionable steps that you can take immediately with your team.

Steve Jones is a professional leadership coach, keynote speaker, and best-selling author who teaches leaders to empower themselves and others, and create cultures of strength, unity, and resiliency. Steve’s positive impact developed as a teacher and head football coach at Kimberly High School, where throughout 11 seasons he led his teams to a record of 129-9 (including 70 consecutive wins) and five state championships. Steve’s winning formula is now captivating Fortune 500 companies, professional sports organizations, and competitive leaders looking to inspire successful teams. Steve is the Co-founder of Jadin|Jones Coaching and Consulting, focusing on leadership, culture, and mindset. He has been commissioned by numerous leading organizations including Verizon, Kimberly-Clark, and Stryker Medical. Steve is the co-author of best-selling book *The Twin Thieves* and is currently a consultant for the Green Bay Packers.



Presented by **BUILD BOLDLY**

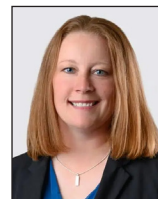
Wednesday, April 15, 2026 | 7:30 – 8:30 a.m.

Workplace Safety Award Presentations & Best Practices Panel

Celebrating our 32nd year, this awards program honors businesses for exemplary safety records and excellence in safety & health management. These businesses are making safety a top priority. They have gone to extensive measures to assure their most valuable asset – their employees – are safe on the job. Join us as we recognize these elite Wisconsin companies! Hear from past winners who will share best practices, unique key components and what brought their company culture to the forefront of Wisconsin safety.



Jerry Chapman
ITU AbsorbTech



Kristin Clements
Boldt



Eric Rasmussen
Agropur



MODERATOR
Chris Halverson
M3 Insurance

Presented by **M INSURANCE** **DWD**
Department of Workforce Development

Drop Your Prize Ticket Here

Tuesday Reception (in hallway)

Educational Sessions Africa 10-80 Mangrove & Aralia

Exhibits/ Expo Hall

Keynotes, Breakfasts, Luncheons



VISIT THE EXPO HALL

TUESDAY APRIL 14

Opens:
9:00 a.m.

Power Hours:
9:00 - 10:00 a.m.
10:30 - 11:30 a.m.
1:30 - 2:30 p.m.

Close:
4:00 p.m.

WEDNESDAY APRIL 15

Opens:
8:30 a.m.

Power Hours:
8:30 - 9:00 a.m.
10:00 - 11:00 a.m.
12:00 - 12:30 p.m.

Close:
12:30 p.m.

EXPO HALL
PRESENTED BY



CONFERENCE AT A GLANCE

TUESDAY

6:30 a.m. Registration Opens
7:00 a.m. Breakfast Opens
7:30 a.m. General Keynote Session
9:00 a.m. Expo Hall Opens
9:30 a.m. Educational Sessions Begin
12:00 p.m. Lunch Opens
12:30 p.m. Professional Headshots Begin in Booth 1012
4:00 p.m. Reception Starts

WEDNESDAY

6:30 a.m. Registration Opens
7:00 a.m. Breakfast Opens
7:30 a.m. Awards Presentation, Keynote Session and Prize Drawings
8:30 a.m. Expo Hall Opens
9:00 a.m. Educational Sessions Begin
10:00 a.m. Professional Headshots Begin in Booth 1012
12:30 p.m. Lunch Opens, Expo Closes, and Bingo Card Prize Winner is Announced
2:45 p.m. Adjourn



WISCONSIN
SAFETY
COUNCIL

84TH ANNUAL CONFERENCE

DOWNLOAD THE CONFERENCE APP



With the app, you can:

- View the schedule
- Plan your sessions
- Browse exhibitors






Download in your app store!

TUESDAY AT-A-GLANCE

TIME	SESSION ROOMS							
	Africa 10	Africa 20	Africa 30-40	Africa 50	Africa 60	Africa 70	Africa 80	Mangrove
7:30 - 9:00 a.m.	<p>Opening Keynote in Kilimanjaro Ballrooms 1-8 Steve Jones, "Developing Leaders Who Grow A Winning Culture" (Breakfast Starts at 7:00 a.m.)</p> <p>Keynote Presented by BOLDT BUILD BOLDLY</p> <p>Breakfast Presented by HY-TEST SAFETY SERVICE</p> <p>Main Stage Presented by MERCURY</p>							
	<p>Expo Hall Presented by WOLTER Accelerate Your Productivity</p> <p>Expo Hall Open: 9:00 a.m. - 4:00 p.m. Expo Power Hour: 9:00 - 10:00 a.m.</p>							
9:30 - 10:30 a.m.		#3 Hidden Price Tag: Why RTW Matter	#1 OSHA Top 10 Most Cited Stndrs	#4 Positive Shift: Messaging For Engagement			#2 Essentials Of Contractor Sfty Mgmt	(9:30-10:30) Growing Greatness
10:00 - 11:00 a.m.	#8 Coaching From The Sidelines				#6 Sfty Concerns Regarding Li-Ion Batteries	#5 Arc Flash Hazard		#7 PSM & RMP Facility Mgmt
	<p>Expo Power Hour: 10:30 - 11:30 a.m.</p> <p>Presented by WOLTER</p>							
11:15 a.m. - 12:45 p.m.	#12 Environ Comp 101			#11 Burnout-Silent Attack On Wkplc	#10 I Have A Spill-Now What?		#9 Inspect W/ Drone-Based Camera, LiDAR, & Ultrasonic Tech	(10:45-12:15) Safety Executive Roundtable
11:30 a.m. - 12:30 p.m.		#15 Elephant In Room-Mental Health Talk	#13 OSHA Update			#14 Machine Safeguarding		#16 Confined Space Entry & Rescue Prep
12:00 - 1:30 p.m.	<p>Lunch Presented by Brakebush</p> <p>Lunch in Kilimanjaro Ballrooms 1-8</p>							
	<p>Expo Hall Presented by WOLTER Accelerate Your Productivity</p> <p>Expo Power Hour & Dessert in Expo Hall 1:30 - 2:30 p.m.</p> <p>Dessert Presented by Sentry</p>							
2:30 - 4:00 p.m.	#22 Understand Electric Power Studies		#21 Deliver More Engaging & Effect Sfty Trng	#17 Speaking Sfty At The Top	#20 Perception Of Risk	#19 Understanding Fall Protection	#18 Navigating Sfty W/ Contingent Labor	(1:15-2:15) Safety Professional's Mindset: Driving Change/Innovation
3:00 - 4:00 p.m.		#23 Top Things To Mess Up A WC Claim					#24 Waste Smarter Not Harder	(3:00-4:00) Technology Is A Game Changer
4:00 - 5:00 p.m.	<p>Reception Presented by Chippewa Valley Technical College</p> <p>Conference Reception in Registration Hallway</p> <p>Drink Ticket Courtesy of Enviro-Safe RESOURCE RECOVERY (ESRR)</p>							

WEDNESDAY AT-A-GLANCE

TIME	SESSION ROOMS							
	Africa 10	Africa 20	Africa 30-40	Africa 50	Africa 60	Africa 70	Africa 80	Mangrove
7:30 - 8:30 a.m.	Opening Welcome in Kilimanjaro Ballrooms 1-8 Workplace Safety Awards Recognition & Past Winner Panel (Breakfast Starts at 7:00 a.m.)							Awards Presented by  Department of Workforce Development  INSURANCE
	Expo Hall Presented by  WOLTER Accelerate Your Productivity Expo Hall Open: 8:30 a.m. - 12:30 p.m. Expo Power Half-Hour 8:30 - 9:00 a.m.							
9:00 - 10:00 a.m.		#28 Mental Health– Injury Connect	#25 Injury Root Cause Analysis	#27 Craziest Journey Into Sfty Prof				CANCELLED #26 Ground-Level Sfty
9:15 - 10:15 a.m.	#30 Beyond Ergonomics				#32 Safety/ Multigenerational Wkfrc	#29 Is Your BBS Program On Life Support	#31 Hearing Conservation	
	Expo Power Hour: 10:00 - 11:00 a.m. Presented by  WOLTER Accelerate Your Productivity							
11:00 a.m. - 12:00 p.m.	#36 WC Costs Helping Sfty Budget?	#39 De-Escalation Strategies	#40 Boosting Frontline Mgr Success	#37 You're In Charge-Now What?	#34 Do You Feel Like A Safety Imposter?	#33 LOTO Effective Prgm	#38 Strats For Contract/ Supply Mgmt	#35 Fundamentals Of Rigging
	Expo Hall Presented by  WOLTER Accelerate Your Productivity Expo Power Hour: 12:00 - 12:30 p.m. Expo Hall Closes at 12:30 p.m.							
12:30 - 1:30 p.m.	Presented by  Brakebush Lunch in Kilimanjaro Ballrooms 1-8							
1:15 - 2:15 p.m.	#43 H.O.P.				#42 Safety Mgmt Systems In Mfg	#41 Virtual Drug Test	#44 Leveraging Mobile Apps-Emerge Response	
1:15 - 2:45 p.m.		CANCELLED #45 What Are WI OSHA Citations	#48 5 C's Of Leadership Trng	#46 Maximizing Impact Of Sfty Trng				#47 25+ Security Controls Protection
	Conference Adjourns							

Earn CEU Credits

Participation in our courses earns you Continuing Education Units (CEUs) — nationally recognized measures of educational accomplishments. Selected courses are designed to meet continuance of certification points for specific professional certifications. For more information on industry-specific certifications, contact WSC at (608) 258-3400. CEU Forms are available at the registration desk.

Emergency Information

Community Emergency Responder: Dial 911

Kalahari Emergency: House Phone No. 44357 (4HELP)

AED: Located throughout the hotel

WSC First Aid Responders: Located at WSC Registration Desk

Weather Emergencies: Kalahari representatives will escort attendees to shelters

Lost and Found: House Phone No. 42036

TUESDAY, APRIL 14 – EDUCATIONAL SESSIONS

9:30 - 10:30 a.m.

#1 OSHA Top 10 Most Frequently Cited Standards (2)

JoAnn Dankert, Principal Consultant, Training Concepts and Solutions

LOCATION: Africa 30-40

#2 Essentials Of Contractor Safety Management (2)

Chris Seider, Director of Health and Safety, Foth

LOCATION: Africa 80

#3 The Hidden Price Tag: Why Timely RTW Matters More Than You Think (1)

Kristen Travis, Safety Risk Manager, McClone Insurance

LOCATION: Africa 20

#4 The Positive Shift: Reframing Messaging For Real Engagement (3)

Josh Schmitz, Safety Director, CG Schmidt Inc.

LOCATION: Africa 50

10:00 - 11:00 a.m.

#5 Arc Flash Hazard: OSHA Guidance Document & Latest NFPA 70E Emphasis On Electrical Maintenance Impacts PPE Selection - Take Note! (2)

Scott Francis, Technical Sales Manager, Westex: A Milliken Brand

LOCATION: Africa 70

#6 Safety Concerns Regarding Li-Ion Batteries In General Industry & Construction (1)

Steven Cash, Risk Management Consultant, KPA

LOCATION: Africa 60

#7 PSM And RMP Facility Management (1)

Dan Szymaszek, VP - HSE, Airgas

LOCATION: Mangrove

#8 Coaching From The Sidelines: Protecting Lone Workers 24/7 (2)

Jack Jackson, Senior Safety Consultant, SafeStart

LOCATION: Africa 10

11:15 a.m. - 12:45 p.m.

#9 Safer, Smarter Industrial Inspections With Drone-Based Camera, LiDAR, & Ultrasonic Technology (2)

Shane Burkart, President & Principal Consultant, Pearl Engineering Corp. / Pearl Engineering Consultants (NY)

LOCATION: Africa 80

11:15 a.m. - 12:45 p.m. (cont'd)

#10 I Have A Spill. Now What? (2)

Jason Christopherson, EHS Division Lead, REI Engineering, Inc.

Brian Bailey, Environmental Services Department Manager, REI Engineering, Inc.

LOCATION: Africa 60

#11 Burnout - The Silent Attack On The Workplace (2)

Savannah Runstrom, EHS Manager - Americas, Thomson Reuters

LOCATION: Africa 50

#12 Environmental Compliance 101 For Safety Pros (1)

Linden Terpstra, Founder/CEO, EHS Support Source

LOCATION: Africa 10

11:30 a.m. - 12:30 p.m.

#13 OSHA Update (2)

Chuck Palmer, Partner, Michael Best

Bethany McCurdy, Partner, Michael Best

LOCATION: Africa 30-40

#14 Machine Safeguarding: Ongoing Compliance & Operational Safety (2)

Matt Clutter, Director of Educational Services and Customer Fulfillment, Rockford Systems, LLC

LOCATION: Africa 70

#15 The Elephant In The Room: Let's Talk Openly About Mental Health At Work (3)

Shelly Meadows, Partner, Navigation Consulting & Training

Martin Franchi, Partner, Navigation Consulting & Training

LOCATION: Africa 20

#16 Being Prepared For Confined Space Entry & Rescue (2)

Steve Kosch, Application Engineering, Industrial Confined Space & Rescue Specialist, 3M Company

LOCATION: Mangrove

2:30 - 4:00 p.m.

#17 Speaking Safety At The Top: Building Executive Understanding & Support For Program Success (3)

Cindy Festge, OTR and Vice President of Strategic Clinical Growth, Fit For Work

Terri Leigh Rhody, Vice President of Marketing, Fit For Work

Carrie Parman, Senior Safety Analyst, Alliant Energy

LOCATION: Africa 50

2:30 - 4:00 p.m. (cont'd)

#18 Navigating Safety With Contingent Labor, Keys To Successful Partnerships (2)

SPONSORED BY



SPHERION[®]
STAFFING & RECRUITING

Joshua Smith, Regional Director, Risk & Safety, Randstad / Spherion

Michael Summers, Vice President, Risk Management - Safety, Security, & Insurance, Randstad / Spherion

LOCATION: Africa 80

#19 Understanding Fall Protection (2)

Patrick Harel, Senior Fall Protection Specialist, 3M Company

LOCATION: Africa 70

#20 Reality Doesn't Count, It's The Perception Of Risk That Matters (3)

George Gruetzmacher, Industrial Hygiene Engineering Research Scientist, WI State Laboratory of Hygiene

LOCATION: Africa 60

#21 How To Deliver More Engaging & Effective Safety Training (2)

Craig Van Asten, Safety Services Manager, Sentry Insurance

Megan Krones, Sr. Safety Consultant, Sentry Insurance

LOCATION: Africa 30-40

#22 Understanding Electrical Power Studies: A Foundation for Electrical Safety (2)

SPONSORED BY



Eric VanMersbergen, Electrical Safety Consultant, Pieper Automation

LOCATION: Africa 10

3:00 - 4:00 p.m.

#23 Top 10 Things An Employer Can Do To Mess Up A Work Comp Claim (1)

Chelsie Springstead, Attorney, Lindner & Marsack
Matthew Kurudza, Attorney, Lindner & Marsack

LOCATION: Africa 20

#24 Waste Smarter, Not Harder: Unlocking Value Through Sustainable Operations (1)

Lisa James, Director of Sustainable Materials, Pellitteri Waste Systems-Recycling Solutions Division

LOCATION: Mangrove

VIEW FULL SESSION DESCRIPTIONS IN THE CONFERENCE APP

NEED A **FREE** PROFESSIONAL HEADSHOT?

Do you need a professional headshot for your online profile or other professional use? Wisconsin Safety Council will be taking FREE professional headshots during the Safety Conference. No dress code required!

Stop by and visit us at Booth 1012 in the Expo Hall!

EXPO HALL | BOOTH 1012

Tuesday
12:30 - 2:30 PM

Wednesday
10:00 - 11:00 AM



PRESENTED BY
 **Aurora Health Care**[®]

PHOTOGRAPHY BY
 **DAVIDS PRODUCTION**

Everyone's Invited to the **CONFERENCE RECEPTION**

Tuesday | 4:00 - 5:00 p.m.

The Reception Will Be Held in the Registration Area. Join Us for Food, Fun and Relaxation.

RECEPTION PRESENTED BY

 **Chippewa Valley
Technical
College**

DRINK TICKET
COURTESY OF

Enviro-Safe
RESOURCE RECOVERY (ESRR)

WEDNESDAY, APRIL 15 – EDUCATIONAL SESSIONS

9:00 – 10:00 a.m.

#25 Injury Root Cause Analysis - The Do's & Don'ts (2)

Cord Semotink, Safety, Security, and Risk Professional, Sargento

LOCATION: Africa 30-40

#26 Ground-Level Safety That Elevates Everything (2)

Dave Mattingly, Director of Sales, Ergo Advantage Inc.

David Munday, Director Distributor Sales, Ergo Advantage Inc.

CANCELLED

#27 Craziest Journey Into The Safety Profession Ever, Which I Do Not Recommend To Anyone! (2)

Jesse Marheine, Safety Manager, Seagrave Fire Apparatus

LOCATION: Africa 50

#28 The Mental Health–Injury Connection: Building A Safer, Healthier Workforce (2)

Pamela Krueger, Account Executive, MSW, CEAP, Aurora Health Care

Dave Wehby, Medical Director, MD, FAAFP, Aurora Health Care

Patsy Romback, Employer Solutions Rep, Aurora Health Care

LOCATION: Africa 20

9:15 – 10:15 a.m.

#29 Beeeeeeeep ... Is Your Behavior-Based Safety (BBS) Program On Life Support? (1)

Joe Melton, Owner/Founder, Ducksworth Solutions

LOCATION: Africa 70

#30 Beyond Ergonomics: Turning Data Into Actionable Solutions (2)

Melissa Samuels, VP of Global Business Development, ErgoFactor, Inc.

Chris Nehrbass, President & Engineering Manager, ErgoFactor, Inc.

LOCATION: Africa 10

#31 Hearing Conservation: Compliance, Best Practice, New Developments (2)

Bill Freeman, President, Environmental Management Consulting

Connor Freeman, Industrial Hygienist, Environmental Management Consulting

Cody Mertens, Industrial Hygienist, Environmental Management Consulting

LOCATION: Africa 80

#32 Safety & A Multigenerational Workforce (1)

Marissa Wilko, Casualty Risk Control Consultant, Aon

Shannon Seefeldt, C&I Risk Control Director, Aon

LOCATION: Africa 60

11:00 a.m. – 12:00 p.m.

#33 Lockout Tagout – What Makes An Effective Program (2)

Tim Krueger, Director, Safety, Health & Environmental, Grande Cheese Company

LOCATION: Africa 70

#34 Do You Feel Like A Safety Imposter? Grow Your Expertise (1)

Todd Loushine, Associate Professor, University of Wisconsin-Whitewater

Jill James, Chief Safety Officer, HSI

LOCATION: Africa 60

#35 Fundamentals Of Rigging (1)

Joe Davis, District Sales Manager, Kito Crosby

LOCATION: Mangrove

#36 Are Workers Compensation Premium Costs Helping Your Safety Initiative Budget Dollars? (2)

Jerry Chapman, Corporate Safety Manager, ITU AbsorbTech

LOCATION: Africa 10

#37 So, You're In Charge....Now What? (1)

Katie Romo, Occupational Health & Safety Engineer, HellermannTyton

LOCATION: Africa 50

#38 Outsourced, Contracted, Or Uncontrolled Risk? – Strategies For Effective Contractor & Supplier Management (2)

Wyatt Bradbury, Principal - Health and Safety; Adjunct Professor, Avetta & University of Alabama Birmingham

LOCATION: Africa 80

#39 De-Escalation Strategies & Dealing With Difficult Situations For Safety Professionals (2)

Drew Moldenhauer, Professor/Owner, Blue Ethos Specialized Training

Richard Webb, Owner, Blue Ethos Specialized Training

LOCATION: Africa 20

#40 Boosting Frontline Manager Success In Safety Leadership (1)

Joe Proulx, EHS Editor, J.J. Keller & Associates

LOCATION: Africa 30-40

1:15 p.m. – 2:15 p.m.

#41 Virtual Drug Testing (3)

Andreas Klotz, Vice President, Remote Health Solutions, Novir, LLC

LOCATION: Africa 70

#42 Safety Management Systems In Manufacturing (2)

Michael Stimson, Safety Manager, John Deere Horicon Works

Danielle Potter, Joint Safety Committee Member, John Deere Horicon Works

Marc Stayner, Safety Professional, John Deere Horicon Works

LOCATION: Africa 60

#43 Human & Organizational Performance (1)

Jennifer Marzu, HOP into Safety, Borregaard USA, Inc.

LOCATION: Africa 10

#44 Leveraging Mobile Apps For Safety & Emergency Response (2)

Cheryl Moran, Project Director, SCS Engineers

LOCATION: Africa 80

1:15 p.m. – 2:45 p.m.

#45 What Are Wisconsin's OSHA Citations (1)

James L. ... Safety Training Instructor, Fox Valley Technical College

CANCELLED

#46 From Knowing To Doing: Maximizing The Impact Of Your Safety Training (2)

Michael Melnik, Owner/President, The Energized Approach

LOCATION: Africa 50

#47 25+ Proactive Security Controls To Protect Your Company From Violence (1)

Ted Hayes, Senior Risk Manager, M3 Insurance

LOCATION: Mangrove

#48 5 C's Of Leadership Development Training (2)

Dave Molenda, Owner, National Speaker, Positive Polarity

LOCATION: Africa 30-40

EDUCATIONAL SESSION HANDOUTS

Educational session handouts are available digitally via the QR Code. Pre-printed handouts are not available. Scan the code to view and download handouts.



2026 CONFERENCE SPONSORS

PRESENTING SPONSOR



PLATINUM SPONSOR



GOLD SPONSORS

SILVER SPONSORS



BRONZE SPONSORS



EVENT SPONSOR



BINGO CARD



WORKPLACE SAFETY AWARD SPONSORS





TRAINING



- ▶ Train-the-Trainer
- ▶ Virtual Reality
- ▶ Lift Truck Operator
- ▶ Aerial Operator
- ▶ Crane Operator
- ▶ Fall Protection
- ▶ Fall Rescue

SOLUTIONS



▶ Forklifts



▶ Pallet Dispensers



▶ Pallet Racking



▶ Specialty Equipment

View our full selection of products & services online at wolterinc.com

CVTC

A TRAINING SPACE BUILT FOR SAFETY

The CVTC **Safety Training Center** is the destination for safety training in west-central Wisconsin, helping individuals and businesses build environmental health and workplace safety skills through realistic, hands-on instruction.

Training areas include:

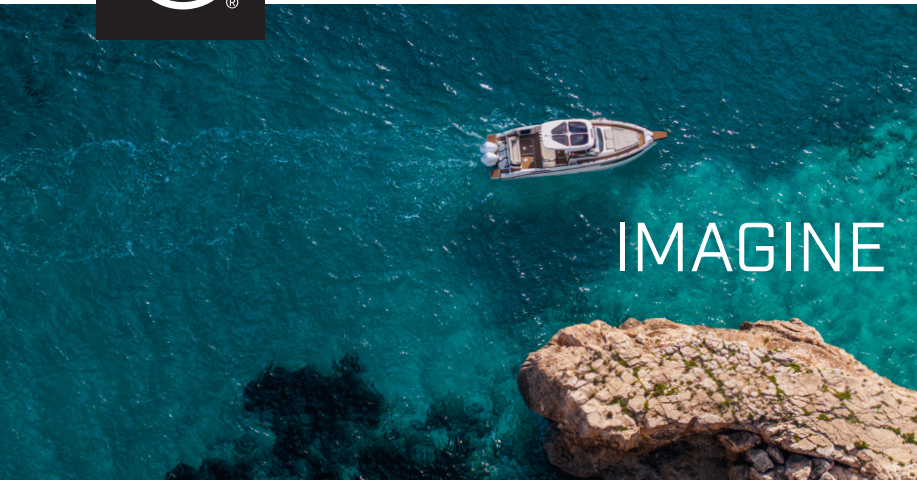
- Confined space and fall protection
- Steam systems
- Hazardous materials (HAZMAT)
- Forklift training
- Lockout/tagout
- Guard measurement and troubleshooting

This space features:

- 3,500 sq. ft. lab
- Computer and docking stations
- 50 seat conference room
- Lounge area

Book your next training: cvtc.edu/SafetyCenter

12 All instruction is fully accredited through the National Safety Education Center. CVTC trainers partner with the OSHA Training Institute to ensure the highest standards of safety and compliance.



IMAGINE



EVERY



THRILLING



ADVENTURE



STARRING



YOU

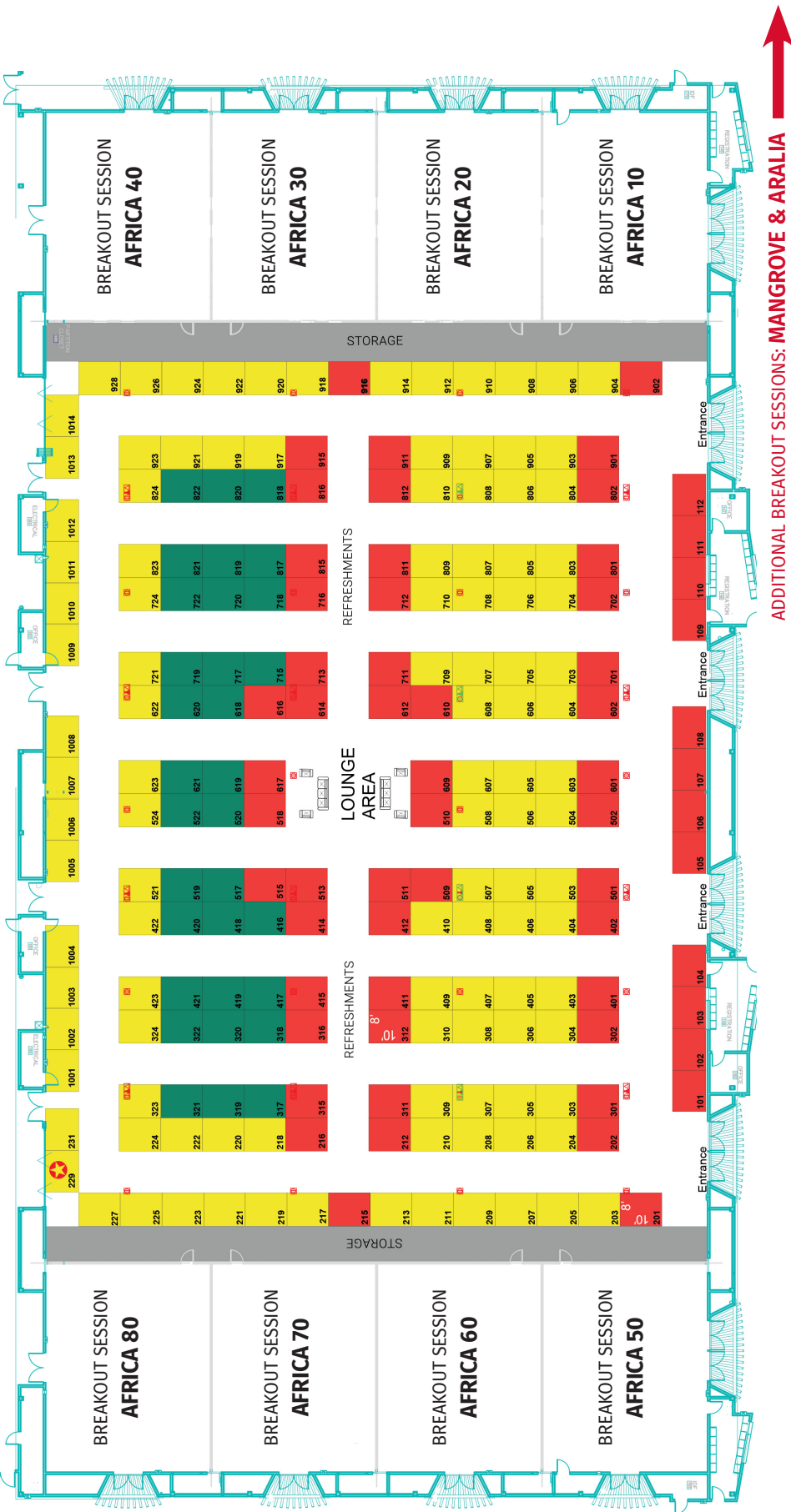
There's a world of unforgettable moments waiting for you on the water.
Make your story one to remember with Mercury.



**START SOMETHING
INCREDIBLE**
MercuryMarine.com



MAP OF EXPO HALL



ADDITIONAL BREAKOUT SESSIONS: MANGROVE & ARALIA

BOOTH NUMBER AND COMPANY NAME

100 LEVEL

- 101 Motion Industries
- 102 Training Tracker[®]
- 103, 104 Portwest
- 105 UW-Whitewater
- 106, 107 Vorpahl Fire & Safety
- 108 Intrepid Industries Inc
- 109 The Exoskeleton Store
- 110, 111 Wernerco
- 112 National Safety Education Center

200 LEVEL

- 201 Excel Engineering
- 202 TRC Companies
- 203 Fit For Work
- 204 Tyndale
- 205, 207 Lighthouse Safety
- 206 Impacto Protective Products
- 208 Onsite Medical Services Inc.
- 209, 211 Two3Solutions
- 210 PMG Safety
- 212 Airgas
- 213 SafetyAmp
- 215 Infiniti HR
- 216 SmartScan Medical
- 217 ITU AbsorbTech
- 218 Anovia Health
- 219 The Whiteboard Video Company
- 220 American Innotek - Brief Relief
- 221 Bureau Veritas
- 222 North American Safety
- 223 MPS Centurion
- 224 Spherion Staffing & Recruiting
- 225 Quality Lockout LLC
- 227 Wellness Education Systems
- 229 Prize Drawing
- 231 SO Safe Equipment

300 LEVEL

- 301 Verona Safety
- 302 North American Rescue
- 303 GVS
- 304 Boon Edam
- 305 OccuCare Injury Prevention
- 306, 308 Magid
- 307 KASK America
- 309 Columbia Southern University
- 310 Mid-America OSHA Education Center
- 311 DuPont Personal Protection
- 312 Rockford Systems, LLC
- 315 RAECO Rents
- 316 MSA - The Safety Company
- 317 Practical Safety and Health Solutions
- 318 Meltric Corporation
- 319, 321 ISK Industries
- 320 Pearl Engineering Corporation
- 322 MotorEyezd
- 323 WatchGas Inc.
- 324 Total Tool Supply

EXHIBITOR BOOTH LISTING

BOOTH NUMBER AND COMPANY NAME

400 LEVEL

401 ErgoFactor
 402, 501 Hy-Test Safety Shoe Service
 403 CIS Onsite
 404 Xylem
 405 OSHEPRO
 406 Liberty Safety
 407 Doctors of Physical Therapy
 408 SESCO Safety
 409 Balestrieri Environmental & Development, Inc.
 410 Novir
 411 Crystal Clean
 412, 414, 511, 513 Wolter Inc.
 415 Wesco
 416 Environmental Management Consulting, Inc.
 417 Endpoint Solutions LLC
 418 Protective Coating Specialists, Inc.
 419 MCR Safety Group
 420 Pellitteri Waste Systems
 422 Dalmech Manipulators
 423 Cintas First Aid & Safety Corporation

500 LEVEL

501, 402 Hy-Test Safety Shoe Service
 502 Everguard ai
 503 Ergodyne
 504 Banom
 505 Ansell
 506, 508 Great Lakes Sales and Marketing
 507 OECs
 509 Hygieneering, Inc.
 510, 609 Health Conservation Inc.
 511, 513, 412, 414 Wolter Inc.
 515 Insight IH Consulting
 517 RKI Instruments, Inc.
 518, 617 Milwaukee Tool
 519 Brady Corporation
 520 U.S. Environmental Rental
 521 HySafe
 522 Olive Promotions
 524 TSI Incorporated

600 LEVEL

601 Wells Lamont Industrial
 602 Walman Optical Safety Eyewear
 603 Med Compass
 604 Wildeck, Inc.
 605 Safety Compliance Associate, LLC
 606 Red Wing Shoe Company
 607 Armor Guys Inc.
 608 Hytorc North
 609, 510 Health Conservation Inc.
 610 Froedtert ThedaCare
 612 HexArmor
 614, 713 Morton Safety
 616 Superior Glove
 617, 518 Milwaukee Tool
 618 SCS Engineers
 617, 518 Milwaukee Tool
 619 FallTech

620 Chippewa Valley Technical College
 621 Veritas Crane
 622 Sheakley Risk & Safety Solutions
 623 National Safety Apparel

700 LEVEL

701 Enviro-Safe Resource Recovery
 702 Vanderloop Shoes, Inc.
 703 Larson Davis
 704 Wellness Mats
 705 Ironclad Performance Wear
 706 Rogan's Work
 707 Engineered Security Solutions, Inc
 708 Thompson Safety
 709 Sentry Insurance
 710 SFM - The Work Comp Experts
 711 Briotix Health
 712 Martor
 713, 614 Morton Safety
 715 Consulting Audiology Associates: The Hearing Place
 716 Great Lakes Power Vac
 717 Ultratech International
 718 ProtectEar / Custom Protect Ear
 719 Wisconsin Vision
 720 Market Force inc
 721 CORA Physical Therapy
 722 EJENDALS INC.
 724 Wellsite LMS

800 LEVEL

801 Novara
 802, 901 Centec Security & Fire Alarm Systems
 803 Safety Engineered Systems
 804 KENT Consumer Brands
 805 SKC Inc.
 806 MSC Industrial
 807 SHOWA Glove
 808 INCOM Manufacturing Group
 809, 811 Aon Risk Services Central, Inc.
 810 Majestic Glove
 812 PIP Global Safety
 815 Industrial Scientific
 816, 915 ART- Active Release Techniques
 817 Rite-Hite
 818 SightProtect by EssilorLuxottica
 819 Fearing's Audio Video Security
 820 Blue Ethos Specialized Training
 821 Weldas Company
 822 TriMedia Environmental & Engineering
 823 CSV Marketing
 824 Optimal Physical Therapy

900 LEVEL

901, 802 Centec Security & Fire Alarm Systems
 902 Access Safety Specialists
 903 Rural Mutual Insurance Company
 904 InterActive Safety Solutions, Inc.
 905 Safety Rail Company
 906 Dirty Ducts Cleaning & Environmental, Inc.
 907 ProactEHS

908 DOME75
 909 Axellent Inc.
 910 Mobile Health Partner
 911 Insta-Mold
 912 Hastings Air Energy Control, Inc.
 914 Complex Security Solutions
 915, 816 ART- Active Release Techniques
 916, 918 Pieper Automation
 917 Master Lock
 919, 921 Surewerx
 920 Ariat International
 922 Rescue One
 923 Qualified Crane Training
 924 Mechanix Wear
 926 Heattrak
 928 Retrofit Environmental, a Division of The Retrofit Companies, Inc.

1000 LEVEL

1001 WisCon
 1002 Electronic Design Company
 1003, 1004 SafeWaze Fall Protection
 1005 Moldex-Metric Inc
 1006 Capital Electric Wire & Cable
 1007, 1008 3M
 1009, 1010, 1011 R.C. Bremer Marketing
 1012 Aurora Health Care
 1013 ZING Green Safety Products
 1014 Orthopaedic Associates of Wisconsin

Visit the EXPO HALL

Presented By



POWER HOURS

TUESDAY

9:00 - 10:00 a.m.

10:30 - 11:30 a.m.

1:30 - 2:30 p.m.

WEDNESDAY

8:30 - 9:00 a.m.

10:00 - 11:00 a.m.

12:00 - 12:30 p.m.

EXHIBITORS

3M Email: Sjohnson5@mmm.com Category: Safety Equipment	#1007, 1008
ACCESS SAFETY SPECIALISTS Email: brent@access-safety-specialists.com Category: Safety Services	#902
AIRGAS Email: heidi.harding@airgas.com Category: Safety Equipment	#212
AMERICAN INNOTEK - BRIEF RELIEF Email: plindemann@briefrelief.com Category: Industrial Hygiene	#220
ANOVIA HEALTH Email: jbrehm@anoviahealth.com Category: Health/Medical Services	#218
ANSELL Email: kate.sieber@ansell.com Category: Safety Equipment	#505

AON RISK SERVICES CENTRAL, INC. Email: shannon.seefeldt@aon.com Category: Other	#809, 811
--	------------------

PRESENTING SPONSOR **AON**

ARIAT INTERNATIONAL Email: gabby.farrell@ariat.com Category: PPE- Apparel	#920
ARMOR GUYS INC. Email: jberger@armorguys.com Category: Safety Equipment	#607
ART- ACTIVE RELEASE TECHNIQUES Email: tprather@artcorpsolutions.com Category: Health/Medical Services	#816, 915

AURORA HEALTH CARE Email: amy.waldoch@aah.org Category: Health/Medical Services	#1012
--	--------------

SILVER SPONSOR **Aurora Health Care**

AXELENT INC. Email: bridget.boo@axelent.com Category: Safety Equipment	#909
BALESTRIERI ENVIRONMENTAL & DEVELOPMENT, INC. Email: tmay@balestrierigroup.com Category: Environmental Services	#409
BANOM Email: lisa@banom.com Category: Safety Equipment	#504
BLUE ETHOS SPECIALIZED TRAINING Email: drew@blue-ethos.com Category: Education/Training	#820

BOON EDAM Email: wendy.stimac@boonedam.com Category: Safety Equipment	#304
BRADY CORPORATION Email: tj_detoro@bradycorp.com Category: Safety Services	#519
BRIOTIX HEALTH Email: allison.coffman@briotix.com Category: Safety Services; Consulting Services; Health/ Medical Services	#711
BUREAU VERITAS Email: michael.dew@bureauveritas.com Category: Safety Services; Other; Industrial Hygiene	#221
CAPITAL ELECTRIC WIRE & CABLE Email: info@capital-electric.com Category: Other	#1006
CENTEC SECURITY & FIRE ALARM SYSTEMS Email: lstrunsee@centecsecurity.com Category: Safety Services	#802, 901

CHIPPEWA VALLEY TECHNICAL COLLEGE Email: tlequia@cvtc.edu Category: Education/Training	#620
---	-------------

GOLD SPONSOR **Chippewa Valley Technical College**

ADVOCATE HEALTH SOLUTIONS for employers



Everything you need from a partner you can trust

- ✓ Employee Assistance Program
- ✓ Employer Clinics
- ✓ Executive Health Program
- ✓ Occupational Health Services
- ✓ Virtual Care
- ✓ Wellness Services
- ✓ Workforce Health

Delivered by



EXHIBITORS

CINTAS FIRST AID & SAFETY CORPORATION #423

Email: bradsbeyer@gmail.com
Category: Safety Service

CIS ONSITE #403

Email: jpanozzo@cisonsite.com
Category: Ergonomic Services

COLUMBIA SOUTHERN UNIVERSITY #309

Email: ernie.smith@columbiasouthern.edu
Category: Education/Training

COMPLEX SECURITY SOLUTIONS #914

Email: mhoffman@cplexsolutions.com
Category: Safety Software

CONSULTING AUDIOLOGY ASSOCIATES: THE HEARING PLACE #715

Email: cchow@savehearing.com
Category: Safety Services; Regulatory Compliance; Health/
Medical Services

CORA PHYSICAL THERAPY #721

Email: tmay@corahealth.com
Category: Health/Medical Services



CRYSTAL CLEAN #411

Email: johanna.garcia@crystal-clean.com
Category: Environmental Services



CSV MARKETING #823

Email: mike@csvmarketing.com
Category: Safety Equipment

DALMEC MANIPULATORS #422

Email: drowles@dalmecusa.com
Category: Safety Equipment

DIRTY DUCTS CLEANING & ENVIRONMENTAL, INC. #906

Email: chad@ddclean.com
Category: Other

DOCTORS OF PHYSICAL THERAPY #407

Email: dhanetho@drsdfpt.com
Category: Health/Medical Services

DOME75 #908

Email: bmontgomery@DOME75.com
Category: Safety Equipment

DUPONT PERSONAL PROTECTION #311

Email: jake.kubiatowicz@dupont.com
Category: Safety Equipment

EJENDALS INC. #722

Email: bryan.west@ejendals.com
Category: Safety Equipment

ELECTRONIC DESIGN COMPANY #1002

Email: esutliff@edcsolutions.com
Category: Safety Services

ENDPOINT SOLUTIONS LLC #417

Email: bob.schoenhard@endpointcorporation.com
Category: Safety and Environmental Compliance Services

ENGINEERED SECURITY SOLUTIONS, INC. #707

Email: tsalchow@engineeredsecurity.net
Category: Other

ENVIRONMENTAL MANAGEMENT CONSULTING, INC. #416

Email: bfreeman@emc-wi.com
Category: Industrial Hygiene

ENVIRO-SAFE RESOURCE RECOVERY #701

Email: pmonet@enviro-safe.com
Category: Environmental Services; Education/Training



ERGODYNE #503

Email: Erick.Johnson@ergodyne.com
Category: Safety Equipment

ERGOFACTOR #401

Email: msamuels@ergofactor.com
Category: Ergonomic Services

EVERGUARD AI #502

Email: jason@everguard.ai
Category: Software

Did You Know?



WSC offers two Safety Certificate programs designed for safety professionals to build and advance their industry knowledge and skill sets.




Start Your Certificate Program
Today at Conference!
wisafetycouncil.org

EXHIBITORS

EXCEL ENGINEERING	#201
Email: mattie.klingenmeyer@excelengineer.com Category: Education/Training	
FALLTECH	#619
Email: aarce@falltech.com Category: Safety Equipment	
FEARING'S AUDIO VIDEO SECURITY	#819
Email: cmatson@fearings.com Category: Safety Services	
FIT FOR WORK	#203
Email: Inoens@wellworkforce.com Category: Ergonomic Services	
FROEDTERT THEDACARE	#610
Email: Melissa.Neuman@Froedtert.com Category: Health/Medical Services	
GREAT LAKES POWER VAC	#716
Email: emiller@greatlakespowervac.com Category: Safety Services	
GREAT LAKES SALES AND MARKETING	#506, 508
Email: dbennett@glsmi.com Category: Safety Equipment	

GVS	#303
Email: hayden.brown@gvs.com Category: Safety Equipment	
HASTINGS AIR ENERGY CONTROL, INC.	#912
Email: meganpartington@HastingsAirEnergy.com Category: Regulatory Compliance; Other; Industrial Hygiene	
HEALTH CONSERVATION INC.	#510, 609
Email: jscholly@hcihealth.com Category: Health/Medical Services	
HEATTRAK	#926
Email: jeff@heattrak.com Category: Safety Equipment; Other; Environmental Services	
HEXARMOR	#612
Email: alexa.osborn@hexarmor.com Category: Safety Equipment	
HYGIENEERING, INC.	#509
Email: kkonkey@hygieneering.com Category: Safety Services	
HYSAFE	#521
Email: mescobedo@hysafe.com Category: Safety Equipment	

HY-TEST SAFETY SHOE SERVICE	#402, 501
Email: pete@htsafetyshoes.com Category: PPE - Shoes/Boots	
 SILVER SPONSOR	

HYTORC NORTH	#608
Email: kyle@hytorcnorth.com Category: Safety Equipment	
IMPACTO PROTECTIVE PRODUCTS	#206
Email: mark@impacto.ca Category: Safety Equipment	
INCOM MANUFACTURING GROUP	#808
Email: alexander.dicks@incomdirect.com Category: Safety Signs	
INDUSTRIAL SCIENTIFIC	#815
Email: jaymie.wachnowsky@indsci.com Category: Safety Equipment	
INFINITI HR	#215
Email: tklug@infinitehr.com Category: Other	
INSIGHT IH CONSULTING	#515
Email: accounting@insightIH.com Category: Consulting Services; Industrial Hygiene; Environmental Services	
INSTA-MOLD	#911
Email: richardgersh@instamold.com Category: Safety Equipment	
INTERACTIVE SAFETY SOLUTIONS, INC.	#904
Email: brent.bryden@outlook.com Category: Safety Services	

Hy-Test Safety Shoe Service

Your Full-Service Provider of Safety Footwear

On-Site Shoemobile Service

- Mobile store brought directly to your location
- Professional sizing and fitting of every employee
- Correct footwear with safety features you specify for each working environment
- Ease of scheduling

Retail Locations

- Voucher programs allow employees to purchase at our one of our stores
- Vouchers offer assurance that only eligible employees will be invoiced
- Vouchers offer another way for us to help manage employee benefits
- No voucher, no problem we accept checks, cash, and all major credit cards

Web Site Capabilities

- Online ordering with customized corporate portal
- Online employee management reporting
- Styles offered will meet your safety requirements



Contact us at

800-236-4366

www.htsafetyshoes.com
sales@htsafetyshoes.com



EXHIBITORS

INTREPID INDUSTRIES INC. #108

Email: PGuidroz@intrepidindustries.com
 Category: Safety Equipment; PPE; Other

IRONCLAD PERFORMANCE WEAR #705

Email: jhoran@ironclad.com
 Category: PPE - Gloves; PPE - Boots; PPE - Other

ISK INDUSTRIES #319, 321

Email: pbooker@isk-industries.com
 Category: Safety Equipment

ITU ABSORBTECH #217

Email: DTangredi@ITUAbsorbTech.com
 Category: Safety Services

KASK AMERICA #307

Email: nathan.hauenstein@kaskamerica.com
 Category: Safety Equipment

KENT CONSUMER BRANDS #804

Email: mary.shirah@kentww.com
 Category: Health/Medical Services

LARSON DAVIS #703

Email: mcox@modalshop.com
 Category: Industrial Hygiene

LIBERTY SAFETY #406

Email: jenny.ko@libertysafety.com
 Category: PPE - Gloves; PPE - Eye Protection; PPE - Apparel

LIGHTHOUSE SAFETY #205, 207

Email: liz@lighthousesafety.com
 Category: Safety Equipment

MAGID #306, 308

Email: alyssamadsen@magidglove.com
 Category: PPE - Gloves; PPE; PPE - Eye Protection

MAJESTIC GLOVE #810

Email: amy.ashcraft@majesticglove.com
 Category: Safety Equipment

MARKET FORCE INC. #720

Email: danielle@marketforceinc.net
 Category: Safety Equipment

MARTOR #712

Email: info@martorusa.com
 Category: Safety Equipment; PPE; Other

MASTER LOCK #917

Email: smrazek@mlock.com
 Category: Safety Equipment

MCR SAFETY GROUP #419

Email: ryan.hutchinson@cordovaisc.com
 Category: Safety Equipment

MECHANIX WEAR #924

Email: mpryor@mechanix.com
 Category: PPE - Gloves

MED COMPASS #603

Email: Bobby@medcompass.net
 Category: Safety Services

MELTRIC CORPORATION #318

Email: bmihojevich@meltric.com
 Category: Safety Equipment; Other

MID-AMERICA OSHA EDUCATION CENTER #310

Email: karen@midamericaosha.org
 Category: Education/Training

MILWAUKEE TOOL #518, 617

Email: Andrew.Thomson@Milwaukeeetool.com
 Category: Safety Equipment

MOBILE HEALTH PARTNER #910

Email: team@mobilehealthpartner.com
 Category: Safety Services

MOLDEX-METRIC INC. #1005

Email: Russell@moldex.com
 Category: Safety Equipment

MORTON SAFETY #614, 713

Email: jamie@mortonsafety.com
 Category: Safety Equipment/Services

MOTION INDUSTRIES #101

Email: shirley.wilkinson@motion-ind.com
 Category: Safety Equipment



We believe that no one should ever have to question the quality or integrity of their food and that by doing the right thing, good things happen.

We prioritize the safety of our team members and the chicken we produce through:

- Safety programs designed to reduce incidents and allowing us to obtain a rate better than the national average
- GFSI (Global Food Safety Initiative) and SQF (Safe Quality Food) Certifications
- Aggressive environmental pathogen testing and a full array of plant audits
- Two ISO 17025 accredited on-site microbiology testing laboratories

LEARN MORE

brakebush.com



Brakebush

EXHIBITORS

MOTOREYEZD Email: motoreyezdllc@gmail.com Category: Safety Equipment	#322
MPS CENTURION Email: eptasnik@gmail.com Category: Safety Equipment; PPE; PPE - Apparel	#223
MSA - THE SAFETY COMPANY Email: daniel.judd@msasafety.com Category: Safety Equipment	#316
MSC INDUSTRIAL Email: lisa.kasubaski@mscdirect.com Category: Safety Services, Safety Equipment	#806
NATIONAL SAFETY APPAREL Email: rcarroll@thinknsa.com Category: PPE- Apparel	#623
NATIONAL SAFETY EDUCATION CENTER Email: mdudek2@niu.edu Category: Education/Training	#112
NORTH AMERICAN RESCUE Email: lbresette@narescue.com Category: Safety Equipment	#302
NORTH AMERICAN SAFETY Email: mhemming@ordersafety.com Category: Other	#222

NOVARA Email: jpatten@kpaonline.com Category: Software	#801
---	-------------

NOVARA

BRONZE & BINGO CARD SPONSOR

NOVIR Email: aklotz@novir-usa.com Category: Health/Medical Services	#410
OCCUCARE INJURY PREVENTION Email: sziccarelli@occucare.net Category: Health/Medical Services	#305
OECS Email: chad@oecscomply.com Category: Safety Services	#507
OLIVE PROMOTIONS Email: bart@olivepromotions.com Category: Safety Equipment	#522
ONSITE MEDICAL SERVICES INC. Email: dave@4hearingtest.com Category: Health/Medical Services	#208
OPTIMAL PHYSICAL THERAPY Email: optimalpt@optimalphysicaltherapy.com Category: Health/Medical Services	#824
ORTHOPAEDIC ASSOCIATES OF WISCONSIN Email: rknowski@orthowisconsin.com Category: Health/Medical Services	#1014

OSHEPRO Email: dpatel@oshepro.com Category: Software	#405
---	-------------

PEARL ENGINEERING CORPORATION Email: sdw@pearlengineering.com Category: Consulting Services	#320
--	-------------

PELLITTERI WASTE SYSTEMS Email: joleene@pellitteri.com Category: Environmental Services	#420
--	-------------

PIEPER AUTOMATION Email: Mark.Hanley@pieperautomation.com Category: Other	#916, 918
--	------------------

SILVER SPONSOR



PIP GLOBAL SAFETY Email: lsmith-kosch@pipusa.com Category: Safety Equipment	#812
--	-------------

PMG SAFETY Email: mj@pmg-safety.com Category: Safety Equipment	#210
---	-------------

PORTWEST Email: mark@portwest.us Category: Safety Equipment	#103, 104
--	------------------



MACHINE SAFETY SOLUTIONS

Protecting People, Processes, and Communities.

- Risk Reduction
- Operator Training
- Safety Consulting
- Turnkey Safety Solutions



LET'S WORK TOGETHER

www.pieperautomation.com | 888.683.0492



EXHIBITORS

PRACTICAL SAFETY AND HEALTH SOLUTIONS	#317
Email: cih@psahs.com Category: Software	
PROACTEHS	#907
Email: cory@proactEHS.com Category: Software; Regulatory Compliance; Consulting Services	
PROTECTEAR / CUSTOM PROTECT EAR	#718
Email: Marketing@westone.com Category: Safety Equipment	
PROTECTIVE COATING SPECIALISTS, INC.	#418
Email: daves@theepoxypeople.com Category: Other	
QUALIFIED CRANE TRAINING	#923
Email: jaystrande@qualifiedcranetraining.com Category: Education/Training	
QUALITY LOCKOUT LLC	#225
Email: dkaras@qualitylockout.com Category: Safety Services	
R.C. BREMER MARKETING	#1009, 1010, 1011
Email: klopour@rcbremer.com Category: Safety Equipment	
RAECO RENTS	#315
Email: randyw@raecorents.com Category: Other	
RED WING SHOE COMPANY	#606
Email: megan.vier@redwingshoes.com Category: Safety Equipment	
RESCUE ONE	#922
Email: dmeyers@rescue-one.com Category: Safety Signs, Safety Services, Safety Equipment; Education/Training	
RETROFIT ENVIRONMENTAL, A DIVISION OF THE RETROFIT COMPANIES, INC.	#928
Email: wfry@retrofitcompanies.com Category: Environmental Services	
RITE-HITE	#817
Email: kwinandy@ritehite.com Category: Safety Equipment	
RKI INSTRUMENTS, INC.	#517
Email: shirley@rkiinstruments.com Category: Safety Equipment	
ROCKFORD SYSTEMS, LLC	#312
Email: kari.larson@rockfordsystems.com Category: Safety Equipment; Consulting Services; Education/Training	
ROGAN'S WORK	#706
Email: rsykes@scvl.com Category: PPE - Shoes/Boots	

RURAL MUTUAL INSURANCE COMPANY	#903
Email: jmmartin@ruralins.com Category: Safety Services	



BINGO CARD SPONSOR

SAFETY COMPLIANCE ASSOCIATE, LLC	#605
Email: dzander@safetycomplianceassociates.com Category: Regulatory Compliance; Consulting Services; Education/Training	

SAFETY ENGINEERED SYSTEMS	#803
Email: markm@safetyengineeredsystems.com Category: Safety Services	

SAFETY RAIL COMPANY	#905
Email: jordan.tapp@safetyrailcompany.com Category: Safety Equipment	

SAFETYAMP	#213
Email: daniel@safetyamp.com Category: Software, Safety Services; Education/Training	

SAFETAZE FALL PROTECTION	#1003, 1004
Email: phil@safetaze.com Category: Safety Equipment	

SCS ENGINEERS	#618
Email: shoke@scsengineers.com Category: Environmental Services	

SENTRY INSURANCE	#709
Email: michael.zblewski@sentry.com Category: Safety/Health Company	

BRONZE SPONSOR



SESCO SAFETY	#408
Email: kcharles@sescosafety.com Category: Safety Services	

SFM - THE WORK COMP EXPERTS	#710
Email: rick.spaulding@sfmic.com Category: Other	

SHEAKLEY RISK & SAFETY SOLUTIONS	#622
Email: doug.flesch@sheakley.com Category: Consulting Services; Education/Training	

SHOWA GLOVE	#807
Email: agilpin@showagroup.com Category: Other	

SIGHTPROTECT BY ESSILORLUXOTTICA	#818
Email: tolson@essilorusa.com Category: PPE - Eye Protection	

SKC INC.	#805
Email: jnye@skcinc.com Category: Safety Equipment	

SMARTSCAN MEDICAL	#216
Email: kwalters@mymartmedical.com Category: Health/Medical Services	

EXHIBITORS

SO SAFE EQUIPMENT #231
 Email: steve@shopsosafe.com
 Category: Safety Equipment

SPHERION STAFFING & RECRUITING #224
 Email: nataliewalsh@spherion.com
 Category: Other

SILVER SPONSOR **SPHERION**
STAFFING & RECRUITING

SUPERIOR GLOVE #616
 Email: jordan.kiss@superiorglove.com
 Category: Other

SUREWERX #919, 921
 Email: cradavich@surewerx.com
 Category: Safety Services

THE EXOSKELETON STORE #109
 Email: ryan@theexoskeletonstore.com
 Category: Ergonomic Services

THE WHITEBOARD VIDEO COMPANY #219
 Email: corey.erickson@thewhiteboardvideocompany.com
 Category: Regulatory Compliance; Consulting Services; Education/Training

THOMPSON SAFETY #708
 Email: ekoble@thompson-safety.com
 Category: Health/Medical Services

TOTAL TOOL SUPPLY #324
 Email: mark.vandenberg@totaltool.com
 Category: Safety Equipment

TRAINING TRACKER® #102
 Email: jen@trainingtrackersoftware.com
 Category: Software, Safety Services; Education/Training

EVENT SPONSOR 

TRC COMPANIES #202
 Email: spittman@trccompanies.com
 Category: Safety Services

TRIMEDIA ENVIRONMENTAL & ENGINEERING #822
 Email: cbrochu@trimediaee.com
 Category: Industrial Hygiene

TSI INCORPORATED #524
 Email: colleen.downham@tsi.com
 Category: Software

Two3SOLUTIONS #209, 211
 Email: jennifer@two3solutions.com
 Category: Other

TYNDALE #204
 Email: jferlazzo@tyndaleusa.com
 Category: Safety Services

U.S. ENVIRONMENTAL RENTAL #520
 Email: Srojo@usenvironmental.com
 Category: Safety Equipment

ULTRATECH INTERNATIONAL #721
 Email: tiho.bozadjiev@ultratechbrands.com
 Category: Safety Equipment; Regulatory Compliance; Environmental Services

UW-WHITEWATER #105
 Email: duggere@uww.edu
 Category: Education/Training

VANDERLOOP SHOES, INC. #702
 Email: andy@vanderloopshoes.com
 Category: Safety Equipment

VERITAS CRANE #621
 Email: al@veritascrane.com
 Category: Education/Training

VERONA SAFETY #301
 Email: sam@veronasafety.com
 Category: Safety Equipment

VORPAHL FIRE & SAFETY #106, 107
 Email: Eric@vorpahl.com
 Category: Safety Equipment



SPHERION
 STAFFING & RECRUITING

SAFER WORKFORCES START WITH THE RIGHT PEOPLE

Locally delivered staffing and recruiting solutions backed by certified safety professionals and OSHA-trained experts.

SAFETY STANDARD OF EXCELLENCE®

4.9/5
 ★★★★★
 Google Rating

VISIT US AT BOOTH #224!
 608-274-6000



 Denotes Bingo Card Participant

EXHIBITORS

WALMAN OPTICAL SAFETY EYEWEAR #602

Email: mklaers@walmanoptical.com
 Category: Safety Equipment

WATCHGAS INC. #323

Email: info@watchgasusa.com
 Category: Safety Equipment

WELDAS COMPANY #821

Email: dmiddlebrooks@weldas.com
 Category: Safety Equipment

WELLNESS EDUCATION SYSTEMS #227

Email: wes@wesonsitecare.com
 Category: Ergonomic Services

WELLNESS MATS #704

Email: tradeshows@wellnessmats.com
 Category: Safety Equipment

WELLS LAMONT INDUSTRIAL #601

Email: kmeger@wellslamontindustrial.com
 Category: Safety Equipment

WELLSITE LMS #724

Email: andrew.choi@wellsitelms.com
 Category: Education/Training

WERNERCO #110, 111

Email: andy@rhincoline.com
 Category: Safety Equipment

WESCO #415

Email: mglatzel@wescodist.com
 Category: Safety Equipment

WILDECK, INC. #604

Email: pstapf@wildeck.com
 Category: Safety Equipment; Other

WisCON #1001

Email: danica.harrier@slh.wisc.edu
 Category: Safety Services

WISCONSIN SAFETY COUNCIL #229

Email: sstevens@wisafetycouncil.org
 Category: Education/Training

WISCONSIN VISION #719

Email: tkinnick@wisconsinvision.com
 Category: Safety Equipment; PPE - Eye Protection;
 Health/Medical Services

WOLTER INC. #412, 414, 511, 513

Email: tony.parsons@wolterinc.com
 Category: Education/Training



GOLD SPONSOR



XYLEM #404

Email: jim.moody@xylem.com
 Category: Environmental Services

ZING GREEN SAFETY PRODUCTS #1013

Email: mmontgomery@zinggreen.com
 Category: Safety Equipment; PPE - Gloves; PPE - Apparel

WISCONSIN SAFETY COUNCIL (WSC)

HOST

Phone: 608.258.3400

Email: wsc@wisafetycouncil.org

www.wisafetycouncil.org

Wisconsin Safety Council is the state's leading provider of safety training, serving members of all sizes and every sector of the economy since 1923. The organization provides scheduled training programs across Wisconsin, in addition to private training, consulting and safety resources. WSC is the official state chapter of the National Safety Council and is a proud program of Wisconsin Manufacturers & Commerce (WMC). Our mission is to make the state the safest place to live, work and play. Together, with its members, WSC will accomplish its goal of ending preventable deaths in our lifetime.


Category: Education/Training



WISCONSIN SAFETY COUNCIL

COMPLETE YOUR BINGO CARD!

WIN A PRIZE | DEADLINE: WEDNESDAY, 12:30 PM

Companies with a  by their listing represent Bingo Card booths. Visit these companies on **Wednesday** before 12:30 p.m. to collect a stamp. Turn in your **completed card** at **Booth #229** to be entered into our final prize drawing of the day.

Prize winners will be announced at 1:15 p.m. on Wednesday in Kilimanjaro Ballrooms 1-8.

* Must be present to win *

PARTICIPATING EXHIBITORS



Booths #809, 811



Booth #620



Booth #801



Booth #903



Booths #412, 414, 511, 513

32ND ANNUAL WISCONSIN WORKPLACE SAFETY AWARDS



Wisconsin Safety Council, M3 Insurance, and the Department of Workforce Development are pleased to celebrate the finalists for the 32nd Annual Wisconsin Workplace Safety Awards competition. Nine of these leading Wisconsin companies are being honored for Wisconsin Workplace Safety Awards. Our awards are given based on the size of the business (number of employee hours) and type of business, as defined by NAICS code. Nominees must be headquartered in Wisconsin, or have significant management presence in the state. The winners are selected from these finalists by an independent panel of 27 judges who are safety, health and insurance professionals.

CONGRATULATIONS TO THE WINNERS!

Category A: Manufacturing

Hydrite Chemical Co.
La Crosse

Land O'Lakes, Inc.
Kiel

Charter Wire LLC
Milwaukee

Custom Fabricating & Repair, Inc.
Marshfield

Sargento
Plymouth

Category B: Agriculture, Transportation, Utilities & Other

Quad
Franklin

Colony Brands, Inc.
Monroe

Category C: Construction

Great Lakes Roofing Corporation
Germantown

JP Cullen
Janesville

QUALIFIED WSA FINALISTS

4Front Engineered Solutions, Muskego
Actus Nutrition, Boscobel
Amphenol Unlimited Services, Oconto
Astronautics Corporation of America,
Oak Creek
August Winter & Sons, Appleton
Badger Mining Corporation, Berlin
Bassett Mechanical, Kaukauna
Bradley Company, Menomonee Falls
Central Specialty Pet, Franklin
Charter Castingo, Shawano
Charter Wire LLC, Milwaukee
Colony Brands, Inc., Monroe
Custom Fabricating & Repair, Inc.,
Marshfield
Evco Plastics, De Forest
Fastenal Company, Winona
Foth, De Pere
Gilman Precision, Grafton
Glenroy, Inc., Menomonee Falls

Great Lakes Roofing Corp., Germantown
Harley-Davidson, Milwaukee
Holtger Bros., Inc., De Pere
Hydrite Chemical Co., La Crosse
Intek Plastics, Medford
ITU AbsorbTech, New Berlin
J. F. Ahern Co., Fond du Lac
JP Cullen, Janesville
John Deere Horicon Works, Horicon
LaForce, Green Bay
Land O'Lakes, Inc., Kiel
Lucas-Milhaupt, LLC, Cudahy
Marinette Marine Corp. dba Fincantieri,
Marinette Marine, Marinette
Masters Gallery Foods, Plymouth
Mercury Marine – Plant 4, Fond du lac
Muza Sheet Metal Co., Oshkosh
Northern Electric, Inc., Green Bay
Opportunity Development Centers, Inc.,
Wisconsin Rapids

Quad, Franklin
Reworld LLC, Winneconne
Rockline, Sheboygan
Rockwell Automation, Richland Center
Rust-Oleum Corporation, Pleasant Prairie
Sani-Matic, Inc., Sun Prairie
Sargento, Plymouth
Sentry Equipment, Oconomowoc
Stoughton Trailers LLC Plant 6, Stoughton
Superior Water, Light and Power, Superior
Suttle-Straus, Waunakee
TC Transcontinental, Menasha
Tekra, a Mativ Brand, New Berlin
Tri-North, Fitchburg
Valley Cooperative Association, Greenville
Van Ert Electric Co., Inc., Kronenwetter
Wausau Supply Company, Schofield
Westphal & Company, Inc., Madison
Wisconsin Steel and Tube Corporation,
Milwaukee

THANK YOU TO OUR
WORKPLACE SAFETY AWARD
SPONSORS



WISCONSIN WORKPLACE SAFETY AWARDS

HYDRITE CHEMICAL Co.

Hydrite Chemical Co., founded in 1929 in Milwaukee, is a major U.S. chemical manufacturer serving industries such as food processing, water treatment, pulp and paper, metal finishing, and agriculture. The company's La Crosse facility, a 30-employee chemical manufacturing and packaging site, has transformed its safety culture and achieved three years with zero OSHA recordable injuries. The team strengthened training through hands-on instruction, improved new-hire onboarding, and standardized safety practices across sites. Management and employees worked collaboratively to eliminate multiple trip hazards, enhance chemical-handling controls, and leverage technology such to reduce risk. In 2025, the site achieved a 0.0 Total Incident Rate while safely shipping 85 million pounds of chemicals, demonstrating exceptional safety performance.



Manufacturing



Location
La Crosse

Established
1929

Website
hydrite.com

Contact
Becky Lane
Director of Safety &
Environmental Compliance
(262) 777-0339

LAND O'LAKES, INC.

Land O'Lakes is a farmer-owned agricultural cooperative best known for producing dairy products. Their Kiel facility, which has operated since 1948, produces cheese and whey powder and has earned recognition for its exceptional, employee-driven safety culture. The team conducted audits, training, ergonomic assessments, and nearly 2,000 other safety engagement activities in 2025. The site integrates safety into daily operations through shift huddles, hazard reviews, and proactive training and planning. Innovative training programs significantly improved retention and reduced near misses. In 2025, employees completed 48 safety improvement projects initiated through employee feedback, safety walks, and team recommendations. The Land O'Lakes Kiel team, made up of 161 employees, continually goes above and beyond industry standards to maintain an all-inclusive, high-performing safety environment.



Manufacturing



Location
Kiel

Established
1921

Website
landolakesinc.com

Contact
Ryan Theunis
EHS Manager
(920) 797-5107

CHARTER WIRE LLC

Charter Wire, a Milwaukee-based division of Charter Manufacturing with over 225 employees, is a leading producer of engineered shaped wire and cold-formed steel products. The company's strong, exposure-based safety system and significant, measurable improvements in 2025 are rooted in its core value of safety. After analyzing three years of injury trends, Charter Wire targeted strains and sprains, hand injuries, and slips, trips, and falls - achieving a 70% reduction in recordable injuries, an 80% reduction in hand injuries, and major ergonomic and slip-prevention advancements. At Charter Wire, safety is reinforced daily through structured safety contacts, operational reviews, and leadership accountability at every level. With increased employee reporting, coaching, hazard elimination, and technology-driven controls, Charter Wire demonstrated a proactive, sustainable safety system that exceeds industry standards.



Manufacturing



CHARTER WIRE

Location
Milwaukee

Established
1936

Website
charterwire.com

Contact
Brian Zoeller
EHS Director
(920) 257-7584

CUSTOM FABRICATING & REPAIR, INC.

Custom Fabricating & Repair (CFR), a Marshfield-based stainless-steel fabrication and installation company, has earned a safety award for dramatic improvement in safety performance and a strong, employee-centered safety culture. As CFR expanded from its 1984 beginning, the company pushed to evolve safety from a regulatory requirement into a core organizational value backed by visible leadership involvement and daily accountability. Today, safety is embedded into the foundation of the company's operations. Notably, the company achieved a 68% reduction in its Total Recordable Incident Rate over the span of just three years, dropping from 3.35 in 2023 to 1.06 in 2025 through proactive use of Job Safety Analyses, hands-on training, cloud-based EHS reporting, and strengthened oversight. CFR's shift from reactive correction to proactive prevention has created a measurable, sustainable, and effective safety system.



Manufacturing



Custom Fabricating & Repair, Inc.

Location
Marshfield

Established
1984

Website
gotocfr.com

Contact
Brittany Olson
Environmental Health &
Safety Director
(800) 236-8773

WISCONSIN WORKPLACE SAFETY AWARDS

SARGENTO

Founded in 1953, Sargento Cheese is a third-generation family-owned business best known for pioneering pre-packaged shredded and sliced natural cheese. Sargento's motto - "We hire great people and treat them like family" - is the foundation of the company's commitment to safety. In the last three years, Sargento has made strides to invest in safety by reducing injuries by more than 30% at a new facility, driving lost-workday rates to historic lows, and using innovative technology to decrease risk. The company's dedication to safety even goes beyond its own team. In 2025, Sargento helped author a safeguarding guide for industry-specific machines, leading the way for other companies to keep their employees safe as well. Sargento demonstrates a resourceful and proactive approach to safety leadership.



Manufacturing



Location
Plymouth

Established
1953

Website
sargento.com

Contact
Brett Huisman
Director Safety,
Security and Risk
(920) 892-3501

QUAD

Quad, a global marketing experience company headquartered in Sussex, produces large-scale print products using advanced press technology, finishing capabilities, and disciplined production processes. Quad's Franklin facility has transformed its safety culture and performance in just one year by shifting focus from merely reducing incidents to fully eliminating them. The Franklin site quickly became Quad's top safety performer across the entire organization. The facility strengthened its prevention strategies by adopting AI-powered incident analysis, using trend data - particularly around strains and sprains - to drive targeted ergonomic upgrades, improved training, and behavior-based safety interventions. This data-driven approach, combined with a companywide belief that safety is a shared responsibility, produced a safety culture centered on prevention and care for one another, which has driven performance and improved metrics.



Agriculture, Transportation, Utilities & Other



Location
Franklin

Established
2006

Website
quad.com

Contact
Natalie Hahlen
Executive Director,
EHSS
(414) 566-7628

COLONY BRANDS, INC.

Colony Brands, Inc. is a diverse enterprise headquartered in Monroe, with multiple Midwest locations. The 100-year-old company has a deeply engaged, self-sustaining safety culture supported by strong leadership, hands-on training, and employee empowerment. With more than 3,200 employees across diverse operations, the company achieved record-low DART and OSHA incidence rates, and eight facilities operated accident-free. Their safety success is driven by extensive mentoring for new workers, over 7,900 behavioral observations to correct at-risk actions, 7,800 positive recognitions, quarterly audits, bilingual training, and frequent emergency drills. Programs like "Safe at 6" significantly reduced forklift-pedestrian risks, while ergonomic initiatives cut sprain and strain cases by 33%. Colony employees submit thousands of hazard IDs, participate in incentive programs, and help shape solutions — creating a proactive, employee-driven, accident-free culture.



Agriculture, Transportation, Utilities & Other



Location
Monroe

Established
1926

Website
colonybrands.com

Contact
Brendan Lewandowski
Safety and Security
Manager
(608) 426-4936

WISCONSIN WORKPLACE SAFETY AWARDS

GREAT LAKES ROOFING CORPORATION

Great Lakes Roofing Corporation, a commercial roofing contractor with 100 employees across four Midwest branches, maintains an exceptional, people-centered safety culture and sustained performance. Despite operating year-round in unpredictable and extreme weather, GLRC maintains an industry-leading 0.60 MOD rating and achieved zero OSHA-recordable incidents in 2025 after strengthening training and corrective-action systems. Their program includes continuous hands-on training, teach-backs, daily inspections, incentive-based Safety Bucks, and standardized, cloud-based documentation that ensures consistent accountability. GLRC emphasizes 100% tie-off fall protection, upgraded safety helmets, ergonomic lifting tools, and detailed site-specific safety planning. Employees are empowered with stop-work authority, proactive communication, and meaningful input on tools and methods. These efforts create a high-trust, prevention-focused culture that delivers measurable safety excellence.



Construction



Location
Germantown

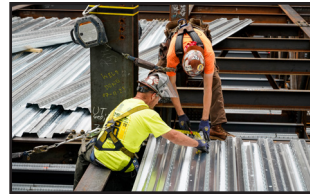
Contact
Kris Moran
(262) 825-8824

Established
1983

Website
greatlakesroofing.net

JP CULLEN

J.P. Cullen, a fifth-generation construction firm specializing in historic restoration projects based in Janesville, embeds safety responsibilities into every role from executives to field crews. Supported by proactive planning, mental-wellbeing initiatives, and technology-driven training such as the daily "Question of the Day" micro-learning system, the company's integrative approach ensures effectiveness. Their commitment includes rigorous site-specific operational safety plans, innovative ergonomic investments like MULE lifting systems, apprenticeship bootcamps to reduce new-hire injuries, and company-wide "7 Rules to Live By" to address high-risk activities. In 2025, J.P. Cullen achieved its lowest EMR in company history - 0.38 - reflecting three consecutive years of outstanding, organization-wide safety execution and continuous improvement.



Construction



Location
Janesville

Contact
Alex Ylvisaker
Safety Director
(608) 754-6601

Established
1892

Website
jpcullen.com

Congratulations

TO ALL OF THE WINNERS!

ARE YOU A MEMBER?



Member Benefits:

Save \$75-200 per conference attendee

Over 50 safety programs throughout the year at a discounted rate

Save on custom on-site trainings for your team

Includes membership in the National Safety Council

and much more!

**Contact WSC today to find out how
you can become a member:**

608.661.6914

wsc@wisafetycouncil.org

Boldt is proud to present:
**Steve Jones: Developing
Leaders Who Grow A
Winning Culture**



WHERE SAFETY LEADS THE WAY

At Boldt, safety isn't just a priority — it's a core value that guides every decision we make. From planning to execution, we foster a culture where every team member looks out for one another and every job is approached with care. Our commitment is simple: ensure everyone goes home safely, every day, without exception. That's the Boldt way.

BOLDT[®]
BUILD BOLDLY

WISCONSIN SAFETY COUNCIL 2026 SAFETY TRAINING

The Wisconsin Safety Council, a division of WMC, is Wisconsin's leading provider of safety training and programming. WSC offers a variety of public courses throughout the year, as well as private trainings hosted at your facility.

MAY 4-7 (In Person Only)

Principles of Occ. Safety & Health

MAY 18-21 (In Person Only)

OSHA 30hr General Industry

MAY 27-28 (In Person Only)

OSHA 10hr General Industry

JUNE 1

Incident Investigation

JUNE 3

Lift Truck Operator,
Train-the-Trainer

JUNE 8

Risk Assessment Workshop

JUNE 15

Team Safety

JUNE 17

Safety Inspections

JUNE 22-23

ESMP Part I

JUNE 24-25

ESMP Part II

JULY 1

Job Safety Analysis

JULY 13-16

Safety Training Methods

JULY 20-21 (In Person Only)

OSHA 10hr General Industry

JULY 27-30 (In Person Only)

OSHA 30hr General Industry

AUGUST 3-6

(In Person Only)

Principles of Occ. Safety
& Health

AUGUST 24

Incident Investigation

AUGUST 26

Lift Truck Operator,
Train-the-Trainer

AUGUST 31-SEPTEMBER 1

ESMP Part I

SEPTEMBER 2-3

ESMP Part II

SEPTEMBER 23-24

(In Person Only)

OSHA 10hr General Industry

SEPTEMBER 28-OCTOBER 1

(In Person Only)

OSHA 30hr General Industry

OCTOBER 5

Job Safety Analysis

OCTOBER 7

Lift Truck Operator,
Train-the-Trainer

OCTOBER 12

Incident Investigation

OCTOBER 19-22

Fundamentals of Industrial Hygiene

NOVEMBER 4

Risk Assessment Workshop

NOVEMBER 9-10

(In Person Only)

OSHA 10hr General Industry

NOVEMBER 16-19

(In Person Only)

Principles of Occ. Safety
& Health

NOVEMBER 30-DECEMBER 3

(In Person Only)

OSHA 30hr General Industry

DECEMBER 7

Lift Truck Operator,
Train-the-Trainer

REGISTER TODAY!



All training sessions will be held in person (with a virtual option) at WSC's Madison office, unless noted otherwise. Course dates and locations are subject to change. For the most up to date course schedule, visit wisafetycouncil.org. Please contact us at 608.258.3400 with any questions regarding training or to schedule a private class at your location.





WISCONSIN
SAFETY
COUNCIL

85TH ANNUAL CONFERENCE

SAVE THE DATE!

85th Annual Wisconsin Safety Conference

APRIL 12-14, 2027

Kalahari Resort & Conference Center
Wisconsin Dells



The Global Leader in Commercial Laundry

Located in Ripon, WI, Alliance Laundry Systems leads the world in commercial laundry sales, product range, reach and R&D investment. No competitor comes close.

As the global leader, we are constantly growing our brands, developing industry-leading products, and expanding our manufacturing capacity. We are always looking for talented individuals to join our team. We offer a rewarding work environment, competitive salaries and attractive benefits.

To become part of a global leader visit www.alliancelaudry.com/careers



Leading performance



PRIZE DRAWING

Drawings Will Be Held Wednesday | 8:30 a.m.

Drop Your Ticket in the Drum Located at Booth #229 in the Expo Hall
Drawing will be held in Kilimanjaro Ballrooms 1-8 following the Opening Session

*** Must Be Present to Win ***

GRAND PRIZE SPONSORS



Get a Fresh Perspective on Risk

Aon helps safety leaders see risk differently with a data-driven approach to safety and practical strategies that reduce incidents, strengthen safety culture, and protect what matters most—your people.

Visit us at booth 809

aon.com

