



VIRTUAL CONFERENCE



Wisconsin Safety Council
78th Annual Conference
September 1-2, 2020

VIRTUAL CONFERENCE

Wisconsin Safety Council Annual Conference

SEPTEMBER 1-2

Table of Contents

2-3	Keynote Speakers, General Information
4-9	Educational Session Descriptions
11-13	Conference Information and Session at a Glance, FAQ
14-18	Exhibitor Listing
19	Sponsor Listing
20-25	Wisconsin Corporate Safety Awards



Chapter of



Wisconsin Safety Council

Wisconsin Safety Council is the state's leading provider of safety training and products, serving members of all sizes and every sector of the economy. The organization provides scheduled training programs across Wisconsin, in addition to private, customized training for your individual company. It is also your number one resource for safety products ranging from first aid training materials to emergency defibrillators. Wisconsin Safety Council is the official state chapter of the National Safety Council and a proud program of Wisconsin Manufacturers & Commerce (WMC).

For more information:

Wisconsin Safety Council
501 E. Washington Ave., Madison, WI 53703
Phone: 608.258.3400
Email: wsc@wisafetycouncil.org
Web: www.wisafetycouncil.org

Tuesday, September 1, 2020 | 8:30 – 9:30 a.m.



Wisconsin's First Comprehensive Safety Report

Ted Abernathy
*Managing Partner,
Economic Leadership*

How does Wisconsin compare to other states when it comes to safety? What innovative safety programs are Wisconsin companies implementing throughout the state? And how can you use data to improve your safety culture? Ted Abernathy will

detail the state's first ever Safety Report in his remarks at the Wisconsin Safety Council Annual Conference. From statistical analysis to in-depth interviews with your peers, Ted will help you build on your current safety plan to help make Wisconsin the safest place to live, work and play.

Sponsored by



Wednesday, September 2, 2020 | 8:00 – 9:00 a.m.



COVID-19: Best Practices, Challenges and Lessons Learned

Cory Goldschmidt
*Director of Safety,
Bassett Mechanical*

Charles B. Palmer
*Attorney, Practice Leader-
Workplace Safety & Health,
Michael Best & Friedrich LLP*



Jim Sutton
*Director – Safety and
Occupational Health,
Mercury Marine*

Laura Waide
*Senior Safety Manager,
Wisconsin Safety Council*

Sponsored by



COVID-19 has changed the world in which we live. Our panel of safety leaders will discuss how they and their respective companies dealt with the pandemic from a safety perspective. They will share their challenges, best practices and what each is doing to plan in moving forward. As businesses continue to face new circumstances each day related to the COVID-19 pandemic, safety professionals need to be ready for anything. These experts will guide attendees through some of the pitfalls of fighting a health-related hazard, while ensuring we can all get back to work safely. In addition to a moderated discussion, attendees will be encouraged to participate in a Q&A session.

GENERAL INFORMATION

Conference Information

Wisconsin Safety Council's Annual Conference is Wisconsin's premier event highlighting health, safety and human resource best practices, challenges and solutions. In its 78th year, the conference provides a unique opportunity for professionals to share resources and experiences with colleagues, and to discuss views and concerns with a wide range of stakeholders. This program is designed by WSC's conference committee members to address today's most significant organizational challenges, and assist individuals in achieving their professional and personal goals.

Maximize Your Training Budget!

Register five or more attendees from your company and receive a special group discount of 15% off each registration. Use code **"Group5"** when registering online. If you need help registering your group of 5+, please call us at 608.258.3400.

Continuing Education Units (CEUs)

WSC offers CEU credits based on program length. You will receive .1 CEU for every hour of class time. Questions or concerns should be directed to your professional licensing board or organization. You will have virtual access to sessions for 30 days following the conference.

Meet the Exhibitors

Tuesday, September 1

Wednesday, September 2

Visit the virtual Expo Hall and learn about the latest products, services and technologies to enhance your performance as a safety professional. View the latest products to make you more effective as a safety professional. Keep checking wisafetycouncil.org for the most current list of exhibitors.

Networking

Virtual networking and video chats will be available throughout the two-day conference.

Tuesday, September 1

12:30 -1:30 PM – Networking Session with Conney Safety

Wednesday, September 2

12:30 - 1:30 PM – Networking Session with Conney Safety

2:30 - 3:30 PM – Happy Hour/Networking Session with Conney Safety

Sponsored By



"Overall this is one of our best conferences we attend the entire year. It is well done and your efforts are obvious and appreciated."

–Michelle Strunsee, Centec Security Systems, Inc.

"The WI Safety Conference is outstanding! I have been very impressed with the content and high level of speakers as well as the value add it provides."

–Paul Klein, M3 Insurance

TUESDAY, SEPTEMBER 1 – EDUCATIONAL SESSIONS

Welcoming Remarks & Corporate Safety Awards Presentations 8:15 – 8:45 a.m.

Keynote Presentation



8:45 – 9:15 a.m.

Wisconsin's First Comprehensive Safety Report

Ted Abernathy
Managing Partner, Economic Leadership

See page 2 for details.

Sponsored by



EXPO HALL OPENS AT 9:00 a.m.

Tuesday, September 1, 2020 | 10:00-11:00 a.m.

#2 Every Step You Take – Walking/Working Surfaces in Construction (2)

Mary Bauer, Compliance Assistance Specialist, US DOL - OSHA

A lot of attention is paid to Personal Fall Arrest Systems for construction workers. However, numerous high cost injuries are caused from slips, trips and falls from the same level or slight elevation changes. With the aging workforce, workers are less agile and if an injury occurs, they may have longer (more expensive) healing time. This session will address the need for a good housekeeping program, evaluation of walking-working surfaces and some controls that can be implemented on job sites.

#3 2018 Arc Flash PPE Tables (2)

Jordan Schlittler, National Safety Consultant, Conney Safety Wesco Distribution

This presentation is designed for those who work on or manage electrical equipment and systems and who use and oversee arc flash PPE. Discussion addresses arc flash PPE categories when considering voltage, fault clearing time and fault current. Training also includes a discussion on limitations concerning table 130.7 and PPE.

#4 Measuring Safety Culture: Identifying and Leveraging Leading Indicators to Track and Improve Performance (2)

Chuck Pettinger, Process Change Leader, Predictive Solutions

There are dozens of cultural surveys meant to uncover gaps in a variety of organizational areas. Most survey instruments have no statistical reliability or validity, but they sound good. This workshop will discuss how to create your own valid cultural (climate) survey, and which specific areas of cultural interest should be investigated. Techniques on developing questions and methods for conducting and then following up on the survey results will help you become an internal cultural expert.

#5 Safety Alerts (1)

Dan Maier, Sr. Safety Manager, Palermo Villa

Our speaker has had great success (injury reduction) utilizing a safety alert system. Basically a quick one page document is created whenever anyone has pain or is involved in property damage immediately when an event takes place. The presenter will share his key success factors.

#6 Safe Work Behavior Engagement (2)

Eric Marsh, Health & Safety Manager, Heritage-Crystal Clean

Workplace safety is a concept most people welcome. The promise of going home from work uninjured every night can be an excellent motivator. The challenge of safety is engaging individuals in the necessary behaviors to achieve this. This session will provide a descriptive overview of a highly effective safe behavior engagement strategy that can keep employees safety-focused throughout their workday.

#7 Marijuana, Drug Testing and Safety in the Workplace (2)

Dean Kelley, Attorney, Ogletree Deakins

Eric Hobbs, Attorney, Ogletree Deakins

Marijuana use in the United States continues to rise, and employers struggle more and more with the ever-expanding patchwork of state laws making medical and recreational use lawful. Add to this that Wisconsin's and other states' disability discrimination laws make it difficult for employers to manage marijuana-using employees. Learn the keys to effective drug testing, compliance with these changing marijuana and discrimination laws and addressing workplace safety threatened by marijuana use.

#8 A Path Forward - Strategies for Identifying the Root Causes of Respirable Crystalline Silica Exposures (3)

Eric Pylkas, Industrial Hygienist, Insight IH Consulting, LLC

You have performed your baseline monitoring for respirable crystalline silica and have identified the work positions that are above the PEL. Now what do you do? Engineering controls are costly, and it is essential that you avoid the missteps that result in lost time and money. Root causes real-time monitoring can be an invaluable tool to ensure you are dedicating resources where they will get the most "bang for the buck." Learn about personal breathing zone, fixed monitoring, and background mapping techniques that can fully identify the exposures in your workplace.

Tuesday, September 1, 2020 | 11:15 a.m.-12:45 p.m.

#12 My Report Says 100 ppm, So What? (3)

George Gruetzmacher, Industrial Hygiene Engineer, WI State Laboratory of Hygiene

Going beyond exposure averages and occupational exposure limits, this advanced session will introduce a radically different method of assessing industrial hygiene sampling results. Instead of reporting an exposure level, a method to determine and report exposures by category (such as well controlled) will be presented.

#17 Stress & the Aging Workforce - Ergonomics & Wellness Strategies to Improve Productivity (2)

Brian Langenhorst, OTR, CEA, Industrial/Ergonomics Specialist, Mayo Clinic Health Systems - Occupational Health

This session will illustrate the physiological changes that occur with aging on strength, flexibility, endurance, fatigue, cognition, memory, balance & coordination. By effectively engaging employees and leadership teams, pro-active wellness and ergonomic strategies will be achieved through low cost, high impact solutions.

Tuesday, September 1, 2020 | 11:30 a.m.-12:30 p.m.

#14 Breaking Down Organizational Silos (2)

Christina Bergman, Managing Consultant - Disability Management Thought Leader, Aon

Shannon Seefeldt, Global Risk Consultant, Aon

Learn how to tackle one of the toughest challenges we face in trying to bridge communication across silos - safety, claims, risk management, operations, human resources and legal. In this session we will share key steps and best practice recommendations which will decrease organizational divide and improve communication across your organization to improve the management process.

#15 You Don't Have to be Perfect to Win (2)

Jerry Chapman, Corporate Safety Manager, ITU AbsorbTech

You don't have to be perfect to be one of the safest companies in Wisconsin. A look at how ITU AbsorbTech, Inc. has sustained a consistent safety culture with multiple locations and been a past Corporate Safety Award recipient multiple times. Examples of components the judges look for in winning submissions.

#16 Impairment Testing (2)

Jennifer Clough, AVP EHS, QBE

Adam Steiner, Lead Loss Control Consultant, QBE

Carol Setters, Predictive Safety

Are your employees... Fatigued? Using prescription drugs? Undergoing a Life altering event? Enjoying two martini/cocktail lunches? Any of these can remove focus from an employee's task-at-hand and impair their judgement, causing devastating injuries. 68.9 percent of the estimated 22.4 million illicit drug users, ages 18 or older, are employed full or part time. Speakers will present a brief overview of drug-free workplace practice and a demonstration of an easy-to-use impairment testing program. The ideal attendee would be anyone tasked with leading an organization's safe work environment or drug-free workplace initiatives.

#41 Worker's Compensation Update (1)

Chris Reader, Senior Director of Workforce and Employment Policy, Wisconsin Manufacturers & Commerce

A discussion of the latest developments in statutes and appellate court decisions relevant to worker's compensation claims in Wisconsin. .

Tuesday, September 1, 2020 | 1:30-3:00 p.m.

#10 Machine Safeguarding Update (1)

Roger Harrison, Director of Training, Rockford Systems, LLC

This session will review Machine Safeguarding in the ANSI B11 Safety Standards, primarily B11.19-2019 on "Risk Reduction Methods" (Safeguarding) along with B11.0 2019 on Risk Assessment for Machinery. Both of these Standards were updated in late 2019 and contain more European content than their previous versions. Optical Presence-sensing devices (light curtains and laser scanners) will be featured along with a wide variety of other possibilities.

#18 The Basics of Fall Protection (1)

Patrick Harel, Senior Fall Protection Specialist, 3M

This presentation will address standards related to working at heights in the various industries. The program will focus on the PFAS (personal fall arrest systems), harness, connector, anchor and rescue and touch on FFPT, (Dropped objects also known as Fall Protection for Tools). We will discuss why Fall Protection is still OSHA's number one citable offense. Each category will emphasize the proper selection, use and inspection of the system. Suspension trauma will be addressed and the need for a proper on site rescue plan and why it is so important.

#19 Exemptions & Exceptions of the Lockout Tagout Rule Explained (2)

Wesley Maertz, Technical Safety Consultant, W.W. Grainger, Inc.

The Lockout Tagout rule contains several exemptions and exceptions which are typically misunderstood or applied leading to costly fines and injuries. This session will identify all the exceptions and exemptions found in the rule and provide an understanding when each can be correctly applied.

#20 HOP Done Right - How To Get Results From Your Human & Organizational Improvement Integration (3)

Rob Fisher, President, Fisher Improvement Technologies, Inc.

More and more organizations are initiating error reduction campaigns, but many struggle with achieving different results. Speaker will share insights regarding proven methods for driving error reduction concepts into the day-to-day work activities within the organization. Emphasis will be on practical techniques which can be integrated into existing systems to drive different results.

#21 Understanding ISO45001 (2)

Mark Zimmermann, Foth Infrastructure and Environment

Requirements of the ISO45001:2018 Standard for Occupational Health & Safety management systems (published March 12, 2018) are explained while focusing on how individual clauses (requirements) of the standard work together to inform and influence elements throughout the management system. We explain how the flow of information is used to improve the identification, prioritization, and management of H&S risk and opportunities. Presentation will benefit those implementing a H&S management system including those transitioning from OHSAS 18001:2007.

Tuesday Networking Session – 12:30 - 1:30 PM
Sponsored by Conney Safety

TUESDAY, SEPTEMBER 1 – EDUCATIONAL SESSIONS

Tuesday, September 1, 2020 | 1:30-3:00 p.m.

#22 Utilizing Servant Leadership to be Effective (1)

Chad Tisonik, Principal/President Advisory Services, HNI

Servant leadership is getting a lot of press these days and the safety world isn't immune. Safety personnel need to LEAD in order to be effective. In order to lead we must understand 5 rules of servant leadership. This session will explore those 5 key rules to help you maximize your results.

#23 Distracted Driving - Building Your Safety Culture (1)

Thomas Goeltz, Vice President - Risk Management Services, Hays Companies

Distracted Driving has become an epidemic in our country, but as Safety Professionals, we spend very little time addressing this problem within our organization. Speaker will talk about his personal experience of losing his daughter Megan due to a distracted driver.

3:00 – 4:00 p.m.
Dedicated Expo Hours.

Tuesday, September 1, 2020 | 4:00-5:00 p.m.

#25 Participatory Ergonomics-An Approach That Includes Ergonomics, Education and Early Intervention (1)

Kathryn McCabe, OTR, MASL, Mayo Clinic Health System

Executing ergonomic improvements has a beneficial impact on ergonomic challenges for both young and experienced workers. The incorporation of participatory ergonomics impacts the overall root cause of workplace injuries by providing employees the tools to be successful and assists with balancing the needs of multiple stakeholders.

#27 GHS/HazCom: The Game – Can You Pass the Compliance Test in 2020? (2)

Greg Duncan, EHS & Sustainability Expert, VelocityEHS

Test your HazCom compliance knowledge in our interactive session, updated for 2020 and complete with exercises that will enhance your understanding of the real-world importance of HazCom, which remains OSHA's 2nd most cited standard and is targeted for additional GHS updates. Don't miss this unique learning experience!

#28 Conversation Based Safety (3)

Joe Melton, Director of Consulting, DEKRA

Take your culture beyond a form and behavioral auditing that may be lacking meaningful interactions among team members. This session will display the science, research and results experienced from a BBS program focusing informal safety conversations with more genuine enforcement. We will display how an organization can shift from their current program with ease and show what results they expect by doing so. The power in BBS observation is in positive consequences of a conversation.

#31 Reasonable Suspicion (3)

Todd Priebe, Director of Safety/Security, Safety Connections Inc

What does reasonable suspicion mean? Often individuals confuse reasonable suspicion with probable cause. Employers don't have to show probable cause for a mandatory drug test, it's much easier than that.

#48 Your Prescription For a Process Safety Emergency (2)

Benjamin Costello, Senior Safety Professional, Sargento Foods

Rita Bollini, Senior Safety Professional, Sargento Foods

Tabletop exercises can be powerful tools in improving your performance during emergencies. Learn how to get the most out of the tabletop exercises with your employees and external emergency response agencies. During the training, we will discuss the process of bringing your internal and external team members together to discuss their roles during emergency response scenarios and work through examples of how tabletop exercises can benefit your business and local emergency management.

#57 Advances in the Diagnosis and Treatment of Carpal Tunnel Syndrome (2)

David Rusch, VP of Business Development, Ovation Hand Institute

Andrea Schraith, Certified Physician Assistant, Ovation Hand Institute

An overview of what is carpal tunnel syndrome, who does it effect, what industries and job duties are most susceptible to CTS and what is the economic burden of CTS on U.S. businesses. What are the traditional treatment care pathways for a patient with CTS, how the Ovation Technique has proven to be a superior alternative and how the Ovation Technique impacts employers, both financially and minimizing absenteeism due to CTS.

#62 Eurofins Safer@Work: Practical Solutions for COVID-19 Testing in the Workplace (2)

Richard Higby, Vice President, Eurofins Microbiology Labs/Senior Consultant, Eurofins

Jen Willig, Senior Consultant – Training and Consulting, Eurofins

Eurofins will provide a programmatic approach to keeping employees Safer@Work by testing for the presence of COVID-19 in the workplace. The session will provide a description of available test options as well as an implementation plan for testing of masks, surfaces, and employees to actively monitor for the presence of the virus that causes COVID-19.

Experience levels: (1)=Fundamental (2)=Intermediate (3)=Advanced





enbridge.com/Wisconsin

70
YEARS Proud
Community
Partner.



Supporting your commitment to workplace safety

**WE'VE GOT THE RESOURCES YOU NEED
TO PROMOTE A CULTURE OF SAFETY.**

- Credentialed safety and industrial hygiene professionals
- Industry-specific training materials
- Safety consultations and assessments
- Professional development seminars

**Let's work together to help keep your business safe.
Give us a call today at 800-4SENTRY (800-473-6879).**

Property and casualty coverages are underwritten, and safety services are provided, by a member of the Sentry Insurance Group, Stevens Point, WI. For a complete listing of companies, visit sentry.com. Policies, coverages, benefits, and discounts are not available in all states. See policy for complete coverage details.

70-750

1308147 8/19/20



**J. J. Keller[®]
TRAINING**

Reliability meets flexibility

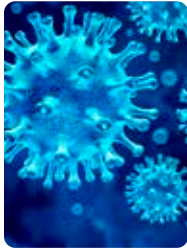
For more information visit <https://demo.jjkellertraining.com/>

WEDNESDAY, SEPTEMBER 2 – EDUCATIONAL SESSIONS

Welcome Remarks & Special Safety Awards

8:00 – 8:15 a.m.

Keynote Presentation



8:15 – 9:15 a.m.

COVID-19: What We Learned/Best Practices Panel

Cory Goldschmidt

Director of Safety, Bassett Mechanical

Charles B. Palmer

Attorney, Practice Leader-Workplace Safety & Health, Michael Best & Friedrich LLP

Jim Sutton

Director – Safety and Occupational Health, Mercury Marine

Laura Waide

Senior Safety Manager, Wisconsin Safety Council

See page 2 for details.

Sponsored by



EXPO HALL OPENS AT 9:00 a.m.

Wednesday, September 2, 2020 | 9:30 – 10:30 a.m.

#34 Safe 4 the Right Reasons (2)

Dale Lesinski, Vice President, DiVal Safety

Back by Popular Demand! This presentation reveals why the conventional approach (rules, regulations, policies and procedures) to employee safety misses the mark, thus delivering frustrating and meager results. "Safe 4 the Right Reasons" explains our human nature, why we do some of the things we do and why we don't do some of the things we should. The message appeals to the critical aspects that drive behavior change and motivates employees to be safe. It also delivers a respectful way that every employee can watch out for one another so when they see something, they can say something.

#35 Environmental Update (1)

Scott Manley, Executive Vice President of Government Relations, Wisconsin Manufacturers & Commerce

This informative session will bring attendees up-to-date on the hottest topics in environmental policy and regulations in Wisconsin and Washington, D.C.

#36 Predicting Injuries Through Leading Indicators and Big Data (2)

Chuck Pettinger, Process Change Leader, Predictive Solutions

Many companies search for true leading indicators. These indicators are essential for moving safety cultures from good to great. However, organizations often struggle with quality. This talk will help participants find their "golden eggs" through a case study and ongoing statistical research on over 450 million safety observations.

#39 Colony Brands Journey to Forklift Safety (1)

Dan Dilley, Safety and Security Manager, Colony Brands Inc.

This program is designed to give any company a starting point to improve its forklift training program while also looking beyond compliance. Colony Brands has a history of hiring large quantities of seasonal forklift drivers and putting them into a busy fulfillment environment. Over the past 10 years, Colony Brands has focused on creating a custom forklift training program that goes beyond compliance and focuses on lift specific and facility specific hazards.

#58 Substance Use in the Workplace (2)

Sadie Bodenbach, CSAC, Clinical Substance Abuse Counselor, Apricity

Many of the industries that forward economy are likely to find substance use among their employees. Although rates of substance use and the substances being used will change over time, it is clear that substance use in the workplace is a health, public safety, productivity, and industrial issue. The workplace allows access to a wide segment of the population for the prevention and intervention of substance use. In this program, we will discuss effective prevention policies and programming to improve safety and reduce the injuries and healthcare costs associated with substance use in the workplace.

#61 A Tiered Approach to Ergonomic Assessments: Quick Assessments to Expert Opinion (2)

Chris Nehrbass, MSMSE, Engineering Manager, ErgoFactor

Melissa Samuels, OTR and Vice President of Global Business Development, ErgoFactor

This presentation highlights the varying needs of companies in growing an ergonomic program. It highlights the benefit of transitioning from less sophisticated tools that help establish the possible presence of ergonomic risk to expert analyses that are needed to justify capital expenditures, or opinions that advance injury management decisions.

10:30 – 11:00 a.m.

Dedicated Expo Hours.

Wednesday, September 2, 2020 | 11:00 a.m. – 12:30 p.m.

#11 If The Fish Aren't Biting, It's Time To Change Bait! (2)

Danny Smith, Senior Safety Consultant, SafeStart(R)

Change seems constant in the business world today with acquisitions, mergers, consolidations, reorganizations, multi-generational issues, and cultural differences becoming prolific. As change becomes the norm, safety professionals must identify the constants but also adapt by updating management and training methodologies in order to remain relevant and effective.

Wednesday Networking Session

12:30 – 1:30 PM

Sponsored by Conney Safety

#43 Active Threat Preparedness Education in the Workplace and Community (2)

Josalyn Longley, Dane County Deputy and Emergency Preparedness Coordinator, Dane County Sheriffs Office

Cindy Holmes, Retired, Dane County Sheriffs Office

Our society is experiencing an increase in active threat events. Unfortunately, here in the State of Wisconsin we are not immune. Oftentimes police response may not be quick enough to intervene before significant injury or death occurs. It is imperative to have options to survive, not only in the workplace, but also in your life. This session will help citizens feel empowered to take action and have the tools and action plans to survive.

Wednesday, September 2, 2020 | 11:15 a.m. – 12:15 p.m.

#46 Loading Dock Safety: Preventing Accidents and Increasing Productivity (2)

Walt Swietlik, Director, Customer Relations and Sales Support, Rite-Hite

Loading docks can be inherently dangerous places. The fast paced environment sees constant movement inside and outside the facility with people, equipment, forklifts, trucks and trailers coming and going throughout the day. This seminar outlines the dangers at the dock and provides recommendations on how to safely operate around them; including information on pedestrian safety and how to protect employees from P.I.T.s and related material handling hazards. *Door prize drawing during this session.*

#47 Environmental Training Overview (1)

Robert Evangelisti, Lecturer, University of Wisconsin-Whitewater

The presentation will provide an overview of Environmental Training requirements. Topics will include components of an environmental training program, phases of a training program, types of environmental training, training program requirements, selection and development of environmental training courses, delivery methods/technology, measuring job performance and training effectiveness. Regulatory requirements for training set by EPA and DNR will be described.

#59 Safety by Design (2)

Jeff Pearl, Principal Structural Engineer; Mike Anderson, Sr. Project Consultant; Susan Rice, Senior Electrical Engineer; Scott Burkart, Senior Safety Consultant; and Mike Evans – all with Pearl Engineering Corporation

This panel discussion will focus on how the Engineering Cycle is used by the disciplines of Structural, Mechanical, and Electrical Engineering to evaluate and design safety into projects on the front end and reduce the dependence on safety rules to prevent accidents and keep workers safe. Combined, the panel has over 100 years of industrial experience designing safe work spaces for clients.

Wednesday, September 2, 2020 | 1:30 – 2:30 p.m.

#26 Introduction to Safe Rigging Practices (2)

Robert Siemens, Senior Training Engineer, Royal Arc Industrial Services

Many industries utilize rigging practices on a regular basis; however, lack of proper training often leads to injuries or can even end with a fatality. This session will cover proper usage of below the hook devices such as slings, shackles and eye bolts. We will also cover safe lifting angles, reading load calculations, and following necessary requirements to make a safe lift.

#50 Why Welding Fumes Are a Hot Topic! (2)

Kay Rowntree, Owner, Industrial Hygiene Sciences LLC

While OSHA's 2006 Hexavalent Chromium Standard brought more awareness of the health hazards associated with welding and thermal cutting on high chromium alloys, more recent changes in the ACGIH TLVs for hexavalent chromium and manganese and the 2018 IARC classification of welding fumes as a human carcinogen have broadened the concerns to more types of welding processes. This session will discuss the various welding and thermal processes to understand fume formation and risk and the reasons why the exposure limits have changed. In addition, welding fume controls will be discussed to help employers reduce risk.

#52 Do You Walk by Safety Issues? If Yes, Why? (3)

James Lehrke, Owner/CEO, Safety Connections

Leaders/Managers/Supervisors are the key to the success of any safety program. Attendees will learn why it is a must to know and understand the consequence of walking by safety issues. In addition, we will understand how this can and does affect business in today's work world. This doesn't stop happening on its own.

#53 Environmental Permitting Basics (1)

Renee Bashel, Small Business Environmental Assistance Coordinator, WI Department of Natural Resources

Confused about environmental permits required for your company? Worried you are not in compliance with environmental requirements? Staff from DNR's Small Business Environmental Assistance Program will explain triggers for different environmental permits or requirements, including air pollution, waste management and wastewater.

#60 The Intersection of E, H, and S: Chemical Safety, Emergency Planning, and Community Right-to-Know (1)

Cheryl Moran, Project Manager, SCS Engineers

Incidents involving hazardous chemicals have the potential to threaten human health and the environment. Effective pre-planning, timely reporting, and organized responses can minimize the harmful effects of hazardous chemical incidents. Join us for a high-level overview of federal requirements, best practices, and an examination of real-life examples of chemical incidents.

Wednesday, September 2, 2020 | 1:30 – 3:00 p.m.

#56 Safety, Security and Mental Health (3)

Charles Palmer, Attorney, Practice Leader - Workplace Safety & Health, Michael Best & Friedrich LLP

Denise Greathouse, Attorney, Michael Best & Friedrich LLP

With a combined 45 years representing and advising employers in challenging employment matters, the speakers have an in depth understanding of the legal and practical challenges presented by difficult employees and threats in the workplace. Workplace violence is often judged with the benefit of hindsight - regulatory agencies and media scrutinize employers for the lack of foresight and awareness. The presenters will discuss how to balance the legal obligations associated with the ADA, FMLA, privacy laws, victim protection laws and OSHA.

Happy Hour/Networking Session with Conney Safety – 2:30 - 3:30 PM
Sponsored by Conney Safety

ARE YOU A MEMBER?



Member Benefits:

Save \$60-120 per conference attendee

Over 100 safety programs throughout the year at a discounted rate

Save on custom on-site trainings for your team

Includes membership in the National Safety Council
and much more!

Contact Barb Deans today to find out how you can become a member:

608.258.3400 or bdeans@wisafetycouncil.org

Young Professionals

Wisconsin Safety Council Young Professionals aim to improve safety through collaboration, innovation and a shared commitment to having every single person go home safe each and every day. From professional development aimed at individuals in the beginning of their careers to increased resources from veteran safety professionals, Wisconsin Safety Council's Young Professionals Group will empower young safety professionals to not only improve safety practices at their organizations, but in all aspects of life.

As a Wisconsin Safety Council member, you also receive WSC Young Professional's membership for **FREE**. Not a Wisconsin Safety Council member? Reach out to Stephanie Blumer at sblumer@wisafetycouncil.org for Young Professional's membership information.



CONFERENCE REGISTRATION INFORMATION

HOW TO REGISTER:

Online: www.wisafetycouncil.org

Register online or call for groups of 5 or more: You will receive a confirmation once your online registration is complete. If sending 5+ attendees, be sure to include the group discount code "**Group5**" before checking out. Payment required at time of registration. Only one type of promo code may be used per registration.

608.258.3400

CONFERENCE: TUESDAY AND WEDNESDAY, SEPTEMBER 1-2

Two-Day Conference Registration

Tuesday – Wednesday, September 1-2

\$330 Member/\$395 Non-Member

Registration includes:

- Virtual access to every educational breakout session and our keynote speakers
- Announcement of this year's Corporate Safety Awards and other Award winners
- **Even more CEUs!** Attendees will have virtual access to most educational sessions for **30 days** following the conference
- Interacting with exhibitors virtually – Connect with them instantly or request a meeting at a later date
- Virtual networking and video chats will be available throughout the two-day conference
- And more!

Visit Our Virtual Event Page!

www.wisafetycouncil.org/events/annual-conference/

REGISTER TODAY: www.wisafetycouncil.org

Not a Member? Contact WSC today.

608.258.3400 • www.wisafetycouncil.org
bdeans@wisafetycouncil.org

CONFERENCE AT A GLANCE

** Times are subject to change*

EVENT	SEPTEMBER 1	SEPTEMBER 2
Expo Hall Hours	9:00 a.m. – 4:00 p.m.	9:00 a.m. – 1:30 p.m.
Awards Presentations	8:15 – 8:45 a.m.	8:00 – 8:15 a.m.
General Keynote Sessions	8:45 – 9:15 a.m.	8:15 – 9:15 a.m.
Educational Sessions	10:00 a.m. – 5:00 p.m.	9:30 a.m. – 3:00 p.m.

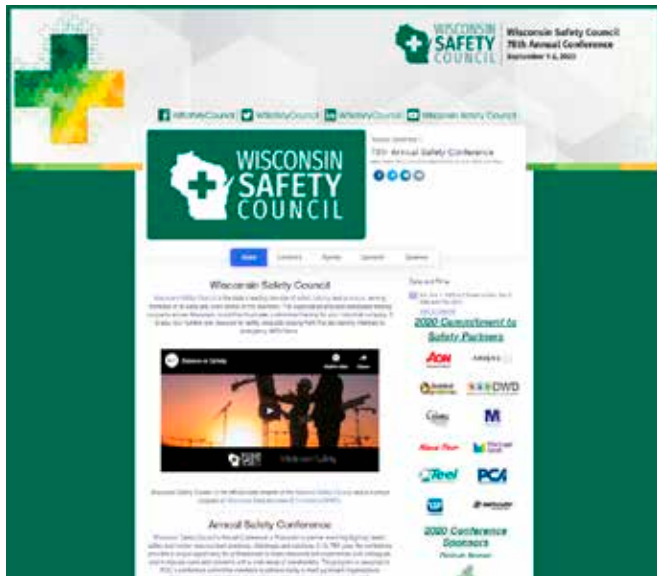
CANCELLATIONS AND SUBSTITUTIONS

WSC Cancellation/Substitution Policy: Virtual registrations are non-refundable. For substitutions/name changes email wsc@wisafetycouncil.org. Changes can be made until the Aug. 26. Discounts are not retroactive for previously registered attendees.

VISIT OUR VIRTUAL EVENT WEBPAGE

Visit Our Virtual Event Page!

www.wisafetycouncil.org/events/annual-conference/



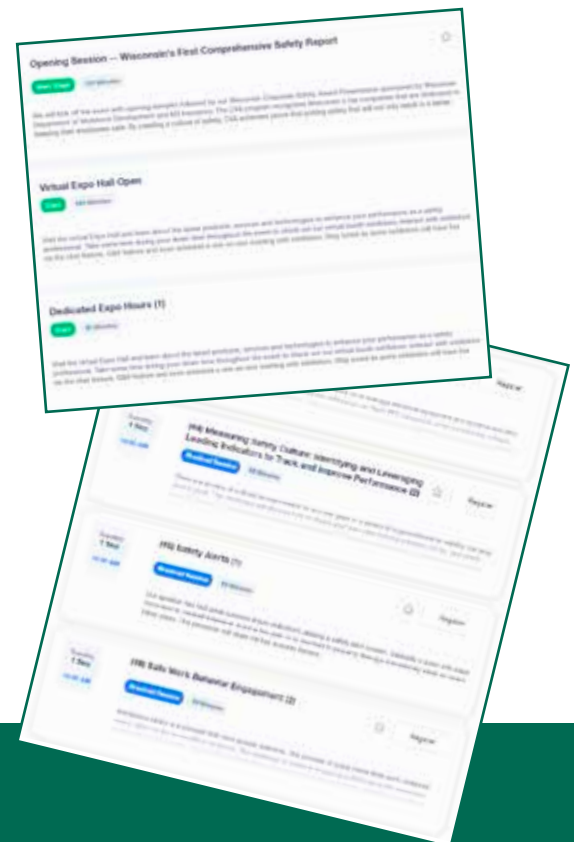
Here is a peek into our virtual event hub!



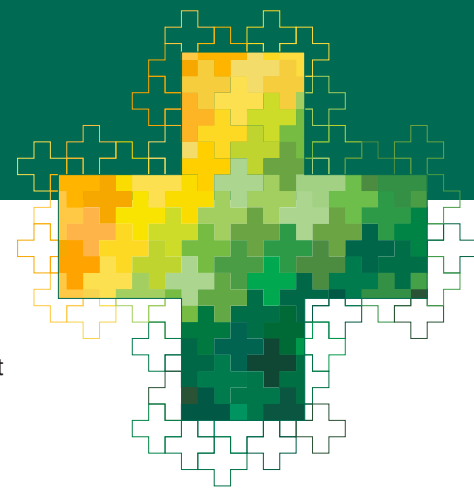
Interact with Exhibitors!



Virtual access to every educational breakout session and keynote speakers!



FREQUENTLY ASKED QUESTIONS



Why would I attend a virtual event?

It's an incredible value! In-person training events can cost over \$500 per CEU, with this virtual event offering classes over the following 30 days, you can bring that cost down to less than \$60!

How do I access the virtual event?

A link will be provided to your email used to register for the event a couple days prior to September 1st. The link will direct you to the virtual event page where you will create your login information.

What if I purchased a ticket, but am unable to attend the virtual event on September 1st and 2nd?

The event platform will be available to you 30 days after the virtual event is over, including most of the breakout sessions and keynote presentations. You will also be able to look at exhibitor booths, but just know that there will NOT be someone virtually at the booth to answer questions immediately. You will be able to reach out to the exhibitor, if an email is provided.

What web browser is best for the virtual event?

Google Chrome is recommended as your web browser when accessing the virtual event platform.

Is there a way to add sessions to my email calendar (i.e. Outlook)?

Unfortunately no, but you can save certain sessions in your cart once you are logged into the event platform to track which ones you want to attend.

Can I still earn CEU credits?

Yes. In order to receive CEU credits, you must answer all three poll questions that are presented during each of the breakout sessions.

I am a speaker in a session, what do I do?

Please reference the following link: <https://support.accelevents.com/en/articles/3992320-i-m-a-speaker-in-a-session-what-do-i-do>

Send additional questions or concerns to David Bartscher at dbartscher@wmc.org

I am an exhibitor at a virtual event, what do I do?

Please reference the following link:

<https://support.accelevents.com/en/articles/4009021-i-m-an-exhibitor-at-a-virtual-event-what-do-i-do>

To get the most out of your experience as an exhibitor, please watch the free training webinar to fully understand your capabilities as a virtual exhibitor: <https://www.accelevents.com/webinar-series-virtual-event-exhibitor-training/>

Send additional questions or concerns to David Bartscher at dbartscher@wmc.org

I am a presenter, can I add links or documents to the breakout session page??

Yes, but links must be sent to dbartscher@wmc.org and we will add links to your session description. Please no files, it must be a link that attendees can click on.

EXHIBITORS

EXHIBITOR CATEGORIES

Category 1:	Computer Software
Category 2:	Education/Training
Category 3:	Environmental
Category 4:	Ergonomic Services
Category 5:	Fire Protection/Security
Category 6:	Food Processing
Category 7:	Health/Wellness Services
Category 8:	Human Resources
Category 9:	Incentives/Awards
Category 10:	Industrial Hygiene
Category 11:	Personal Protection
Category 12:	Publications
Category 13:	Safety/Health Company
Category 14:	Safety Equipment/Services
Category 15:	Other

3M

3M Center, Bldg. 235-2W-70
St. Paul, MN 55144
Phone: (262) 455-0995 and (608) 215-6412
Email: lmazzolini@mmm.com and rspeth@mmm.com

www.3m.com/workersafety

3M PPE Safety Solutions: From the most basic to the most specialized needs, 3M offers the health and safety protection you and your workers need most, so everyone can perform at their best.

Category: 10, 11, 14

Contact: Lance Mazzolini and Ryan Speth

ANSELL

2637 Radinz Road
Green Bay, WI 54311
Phone: (920) 445-9594
Email: sean.smith@ansell.com

www.ansell.com/us

Ansell's Industrial division manufactures and markets high-performance hand and body protection solutions for a wide-range of industrial applications. Ansell protects workers in almost every industry including automotive, chemical, metal fabrication, machinery and equipment, food, construction and mining.

Category: 11, 14, 13

Contact: Sean Smith

AP SAFETY TRAINING

374 Park Road
Lexington, SC 29072
Phone: (612) 843-2214
Email: palani@apsafetytraining.com

www.apsafetytraining.com

AP Safety Training provides employee HR safety and safety training via a wide variety of options, including an LMS platform with testing and tracking features, streaming video, SCORM course shares, digital media licensing, flash drives and DVDs. Custom on-site production services and customized LMS course creation services are also available.

Category: 2, 8, 13

Contact: Palani Pozzani

APRICITY

1010 Strohmeier Drive
Neenah, WI 54956
Phone: (920) 722-2345
Email: sbodenbach@apricityservices.com

www.apricityservices.com

Apricity provides those impacted by substance use disorders with a full spectrum of care including treatment, employment and support services in a safe, progressive recovery community. Our Recovery Works Initiative focuses on providing customizable training for employers and employees about the addiction epidemic within our nation and the solution, recovery. These services set a baseline for recovery friendly workplaces and aids in the development of safer Wisconsin communities.

Category: 2, 7, 8

Contact: Sadie Bodenbach

BRADY CORPORATION

6555 West Good Hope Road
Milwaukee, WI 53223
Phone: (414) 614-7696
Email: colin_huth@bradycorp.com

www.bradyd.com

Make Brady your partner. Get expert guidance to put an effective program in place with our software, services and products for lockout tagout, arc flash and confined space.

Category: 14, 2, 1

Contact: Colin Huth

CARRON NET COMPANY

1623 17th Street - PO Box 177
Two Rivers, WI 54241
Phone: (920) 793-2217
Email: rschirmer@carronnet.com

www.carronnet.com

Carron has unmatched experience producing high quality netting for virtually any Pallet Rack Guard or Conveyor Containment application in both existing facilities and new construction. Pallet Rack Guard Nets are economical and offered in a variety of mesh sizes, helping comply with guarding requirements under OSHA 1926.250. Cost-efficient and easy to install, Conveyor Nets help meet safety requirements under 1926.555 while allowing quick and easy access to clear jams and maintain equipment. Other factory and warehouse uses for Carron nets include mezzanine/aisle guards, barrier nets around secure storage racks and cages, cargo nets and containment nets for picking and transport carts. Carron regularly partners with OEM manufacturers to create nets used in delivery vehicles and heavy equipment cabs and also produces small mesh nets for bird control and windscreens/tarps for debris containment. If you want Wisconsin-made, best quality netting to protect your employees and products, look no further than Carron Net.

Category: 14

Contact: Russ Schirmer

COLUMBIA SOUTHERN UNIVERSITY

21982 University Lane
Orange Beach, AL 36561
Phone: (251) 923-4055
Email: ernie.smith@columbiasouthern.edu

www.columbiasouthern.edu

Columbia Southern University offers online associate, bachelor's and master's degrees and certificate programs in fields such as environmental management, occupational safety and health, business administration and more! Visit our website or call us to learn more!

Category: 2, 13, 3

Contact: Ernie Smith

Proud Member of WSC

Proud Member of WSC

Proud Member of WSC

SELECT SPONSOR

Proud Member of WSC

CONNEY SAFETY

3202 Latham Drive
Madison, WI 53713
Phone: (800) 356-9100
Email: safetysupport@conney.com

www.conney.com

For more than 70 years, workplace safety has been our sole focus. Conney Safety stocks a complete selection of safety products and equipment. We stand behind our products with a full suite of customized safety solutions designed to lower costs and risk while boosting compliance and productivity. From safety planning assistance to customized e-commerce solutions, Conney Safety makes workplace safety programs convenient, cost-effective and hassle-free. Services include: safety training (on-site and online); safety assessments and inspections; dedicated consultation and support from Certified Safety Professionals (CSP); safety project management; and custom product ordering portals.

Category: 14, 13, 4

COOLING VESTS BY MARANDA ENTERPRISES

6350 West Donges Bay Road
Mequon, WI 53092
Phone: (414) 881-3340
Email: dawn@marandaenterprises.com

www.iceveststore.com

Originally created for use in the foundry industry...highly effective Cooling Vest differs from anything else on the market. Light 4 pounds, one size fits XS-6X. Visit our booth and we'll show you our "secret" cooling ingredient.

Category: 11, 10, 13

Contact: Dawn Fuschs

ENVIRONMENTAL QUALITY MANAGEMENT

1800 Carillon Boulevard
Cincinnati, OH 45240
Phone: (513) 207-3031
Email: asantel@eqm.com

www.eqm.com

Founded in 1990 and headquartered in Cincinnati, Ohio, EQM is a full-service environmental consulting and emission measurement firm working with commercial and industrial clients across the United States. EQM's Commercial Services group combines in-house expertise and equipment to provide innovative and practical solutions to our clients' environmental compliance needs – the result is that our clients better understand complex regulations, can maintain the proper procedures that protect the environment and human health, and stay in compliance.

Category: 3, 10, 13

Contact: Alexis Santel

ESSILOR

5205 Highway 169 North
Minneapolis, MN 55442
Phone: (800) 553-9698
Email: jclark@essilorusa.com

www.essilorpse.com

At Essilor Prescription Safety Eyewear, we are intensely dedicated to research and innovation and work to create the safest, most comfortable and durable safety eyewear designs in the world.

Category: 11, 14, 7

Contact: John Clark

Proud Member of WSC



EUROFINS

2200 Rittenhouse Street, Suite 175
Des Moines, Iowa 50321
Phone: (608) 327-9378
Email: davidroth@eurofinsus.com

www.eurofinsus.com

Eurofins is the ideal partner to protect your brand. With a portfolio of over 200,000 analytical methods, Eurofins is committed to outstanding client service, high quality standards and scientific excellence. Our approximate 48,000 trained staff in 800 laboratories across 47 countries are prepared to provide local expertise wherever your business is located. In addition to being a trusted source for reliable laboratory services, Eurofins is a full service food safety provider.

Category: 2, 6, 14

Contact: Dave Roth

FEHR GRAHAM ENGINEERING & ENVIRONMENTAL

909 North 8th Street, Suite 101
Sheboygan, WI 53081
Phone: (920) 453-0700
Email: info@fehr-graham.com

www.fehr-graham.com

Fehr Graham is a leading Midwestern engineering and environmental firm with 10 offices across Wisconsin, Illinois and Iowa. We have technical specialists in several services, including environmental health and safety, environmental compliance, safety compliance, remediation, hydrogeology, potable water, wastewater, transportation, structural surveying, site design, landscape architecture and funding solutions. Our mission is to improve the quality of life for our clients and the communities where they live and work by providing collaborative, insightful, results-driven solutions.

Category: 13, 3

Contact: Matt Dahlem, PG

FORM-A-TREAD COMPANY

375 Morgan Street, Suite 1-B
Phoenixville, PA 19460
Phone: (610) 994-2138
Email: bob@rgfmaterials.com

www.Form-A-Tread.com

Form-A-Tread Company, a division of RGF Materials Co (LLC) manufactures Form-A-Tread, Form-A-Tread GLOW and Form-A-Tread SL (Self Leveling), proven epoxy safety products that permanently adhere to all common building surfaces. They can be applied to new and existing stairs, ramps, ladders, walkways and vehicles to significantly increase personal safety, traction and visibility, providing a far superior alternative to non-skid tape or paint.

Category: 13, 14

Contact: Bob Finkenaur

GOFF'S ENTERPRISES

700 Hickory Street
Pewaukee, WI 53072
Phone: (262) 347-8033
Email: bobw@goffscw.com

www.goffscurtainwalls.com

Goff's Enterprises, Inc. is based in Pewaukee, WI, and has been manufacturing a wide variety of flexible space partitioning products for over 30 years. Goff's provides industries with products to improve safety, productivity, and profitability. The Goff's team is committed to delivering the most reliable and innovative solution to improve efficiency in your facility.

Category: 6, 11, 14

Contact: Bob Wiesner

Proud Member of WSC

Proud Member of WSC

EXHIBITORS

HASTINGS AIR ENERGY CONTROL

5555 South Westridge Drive
New Berlin, WI 53151
Phone: (262) 364-0500
Email: dougyoung@hastingsair.com

www.hastingsair.com

Forget about what you've seen! FumeVac is the absolute best way to control welding fumes at the source. Our high pressure, high capacity systems are the most effective way to protect welders from the serious threats caused by Hexavalent Chromium, Manganese, and other harmful contaminants present during the welding process."

Category: 14, 11, 3

Contact: Doug Young

HONEYWELL INDUSTRIAL FOOTWEAR

101 Station Drive, Suite 230
Westwood, MA 02090
Phone: (715) 271-6232
Email: joseph.horan@honeywell.com
Honeywell Industrial Footwear offers a full line up on safety boots and footwear from brands like MUCK, XTRATUF, SERVUS, Ranger, NEOS, and Oliver. Featuring the highest of quality in Rubber, Neoprene, PVC, and leather.

Category: 3, 11, 14

Contact: Joe Horan

HUB INTERNATIONAL

2120 Pewaukee Road, Suite 202
Waukesha, WI 53188
Phone: (262) 993-2761
Email: pete.aisbet@hubinternational.com

www.hubinternational.com

HUB is world's 5th largest insurance broker with three offices in Wisconsin to serve you. We offer a global reach to insurance and risk management resources on local basis for Property & Casualty and Employee Benefits. We offer creative solutions to reduce ever rising medical costs and strong, behavioral based safety programs. We align professional risk management services team for clients in the agricultural, construction, entertainment, healthcare, hospitality, manufacturing and transportation industries.

Category: 8, 13, 15

Contact: Pete Aisbet

NELSON JAMESON, INC.

3200 South Central Avenue
Marshfield, WI 54449
Phone: (800) 826-8302
Email: sales@nelsonjameson.com

www.nelsonjameson.com

We offer a wide line of products and services to help keep your employees safe and healthy while on the job. We have a tremendous selection of gloves, footwear, clothing, head and face protection, and respiratory protection. We also offer facility identification and 5S products with custom solutions available. In addition, we have a full line of color-coded and metal detectable products to help prevent cross-contamination. At Nelson-Jameson your safe, quality food is our business.

Category: 11, 14, 10

Contact: Michelle Onsager

NIGHTSTICK BY BAYCO PRODUCTS

640 South Saden Boulevard
Wylie, TX 75098
Phone: (972) 896-4227
Email: tboeckman@nightstick.com

www.nightstick.com

Nightstick, is a global brand of professional LED lighting products including flashlights, headlamps and Intrinsically Safe hazardous environment lighting solutions that exceed the industry standards in performance, quality, user-safety and value. The Nightstick product line is designed and manufactured to outperform and be of a higher quality standard than any other product in its class. Even with the highest quality standards, Nightstick products cost less as compared to competitor offerings.

Category: 14, 11, 15

Contact: Troy Boeckman

OECS (OSHA/ENVIRONMENTAL COMPLIANCE SYSTEMS)

1000 Shelard Parkway, Suite 140
St. Louis Park, MN 55426
Phone: (763) 417-9599
Email: timo@oecscomply.com

www.oecscomply.com

OECS provides safety and environmental consulting services for industrial and construction companies.

Category: 2, 3, 13

Contact: Tim O'Connor

OVATION HAND INSTITUTE

10532 North Port Washington Road
Thiensville, WI 53092
Phone: (414) 253-7041
Email: drusch@ovationhand.com

www.ovationhand.com

Ovation Hand Institute has very quickly changed the status quo of how patients who suffer from carpal tunnel syndrome are treated, offering a completely non-invasive, permanent solution to carpal tunnel syndrome. The Ovation Technique is a procedure that is quick, painless and far less expensive than the traditional approach. The value proposition is a return back to normal function faster than any current therapy or intervention at half the cost of surgery.

Category: 7, 8, 13

Contact: Dave Rusch

PACIFIC HANDY CUTTER/KLEVER INNOVATIONS

1734-C Airpark Drive
Grand Haven, MI 49417
Phone: (800) 218-3068
Email: angela@kleverinnovations.net

www.kleverinnovations.net

Klever Innovations offers safety packaging and opening tools.

Category: 14

Contact: Angela Robinson

Proud Member of WSC

Proud Member of WSC

PEARL ENGINEERING CORP.

110 East Grand Avenue, Suite 210
Wisconsin Rapids, WI 54494
Phone: (715) 424-4008 and (715) 697-6907
Email: jrk@pearlengineering.com and mje@pearlengineering.com
www.pearlengineering.com

Pearl Engineering provides safety engineering, consulting and training; professional engineering; and project management services which encompass economic production, maintenance, practical, safety, aesthetic and immediate or emergency aspects of value. We maximize our client's investment in their operations by increasing production, reducing manufacturing and maintenance costs, and providing a safe and efficient workplace for their employees.

Category: 13, 2, 15

Contact: James Kuester and Mike Evans

RITE-HITE

8900 North Arbon Drive
Milwaukee, WI 53223
Phone: (920) 393-0913
Email: lmancheck@ritehite.com
www.ritehite.com

Rite-Hite is a world leader in the manufacture, sale, and service of loading dock equipment, industrial doors, safety barriers, machine guarding, HVLS fans, industrial curtain walls, and more – designed to improve safety, security, productivity, energy consumption, and environmental control. The ongoing evolution of Rite-Hite products and services is fueled by our commitment to innovation and passion to provide effective solutions for customers.

Category: 14

Contact: Logan Manchek

SAWSTOP

11555 SW Myslony Street
Tualatin, OR 97062
Phone: (503) 595-2665
Email: sales@sawstop.com
www.sawstop.com

One of the most dangerous tools at a company is the table saw. SawStop is the answer. North America's #1 Table Saw stops the blade on contact with skin.

Category: 11, 13, 14

Contact: Amber Hayter

SCS ENGINEERS

2830 Dairy Drive
Madison, WI 53718
Phone: (608) 216-7325
Email: cmoran@scsengineers.com
www.scsengineers.com

SCS Engineers is an environmental consulting and contracting firm serving public and private clients across the nation and around the world. Our core capabilities are in solid and hazardous waste management.

Category: 3

Contact: Cheryl Moran

SHARKCRATES

5050 South 13th Street, Suite B
Milwaukee, WI 53221
Phone: (414) 892-4202
Email: n.collins@sharkcrates.com
www.sharkcrates.com

SharkCrates is a Milwaukee-based manufacturer of collapsible wood shipping crates, which are used to safely ship parts, electronics, machinery, and other high-value items all over the world. The modular design of the SharkCrate system allows our empty crates to be shipped and stored flat, which saves freight cost and valuable warehouse space. In addition, our crates are ISPM-15 certified and ready for export. We offer standard and custom sizes to fit just about any requirement.

Category: 14, 15

Contact: Nate Collins

SKC Inc.

863 Valley View Road
Eighty Four, PA 15330
Phone: (800) 752-8472
Email: chuckn@skcinc.com
www.skcinc.com

SKC is dedicated to serving and supporting occupational health and safety professionals with air sampling solutions based on science and expertise. Rely on SKC for accurate direct-reading monitors for noise, gas, particulates, and IEQ, PPE assessment solutions, surface/dermal testing kits, affordable rental equipment, air sample pumps, sampling media and bags, passive samplers, and silica sampling kits. SKC offers expert technical support and friendly customer service. OHS professionals trust SKC! We are Science. Serving People.

Category: 10

Contact: Chuck Nachreiner

TITAN CPR ASSOCIATES

10120 South Windsor Drive
Oak Creek, WI 53154
Phone: (414) 808-2277
Email: kim@titanCPR.us
www.titanCPR.us

We provide on-site CPR/AED (all levels), first aid, BBP, bleeding control, and mass casualty training. We offer CPR cards from 4 bodies, ERI, ASHI, EMS Safety and AHA. All classes are customer driven, customized to your agency. We also sell AED packages.

Category: 2, 7, 14

Contact: Kimberly Tietyen

TRC

150 North Patrick Boulevard
Brookfield, WI 53045
Phone: (262) 879-1212
Email: bharms@trcsolutions.com
www.trcsolutions.com

TRC is a national engineering and consulting firm providing integrated environmental compliance and health and safety services. TRC employs over 5,500 technical professionals and support personnel at more than 100 offices throughout the United States. Our team includes professional engineers and certified professionals in industrial hygiene, safety and hazardous materials.

Category: 3, 10, 13

Contact: Brian Harms

EXHIBITORS

VERONA SAFETY

913 Watson Avenue
Madison, WI 53713
Phone: (608) 273-3520
Email: samie@veronasafety.com

www.veronasafety.com

Verona Safety is your one-stop shop for workplace safety supplies and safety consultation. As a locally owned small business in Madison, we have built our reputation with an uncommonly knowledgeable staff, timely delivery and an emphasis on customer service. We have personal protective equipment (PPE), work wear, plant safety and emergency response items to bring you top of the line safety items at a fair price.

Category: 14, 11, 2

Contact: Samie Gossfield

WALMAN OPTICAL

801 12th Avenue North
Minneapolis, MN 55411
Email: jmarcella@walmanoptical.com.

www.walmanoptical.com/safety

Walman Optical Safety Eyewear is a nationwide network of optical laboratories and professionals dedicated to providing the safest vision to all eyecare patients. Our network gives you localized service for the customized safety eyewear program that fits your company's needs and keeps your employees seeing safely. Learn more by calling 844.401.7702 or visit www.walmanoptical.com.

Category: 13, 14, 11

Contact: Jeff Marcella

WERNER ELECTRIC

4800 West Prospect Avenue
Appleton, WI 54914
Phone: (920) 858-7934
Email: jcasper@wernerelectric.com

www.wernerelectric.com

Werner Electric Supply is a distributor of quality electrical, lighting, datacom, pneumatics, safety and automation solutions. We have 12 well stocked locations across Wisconsin and upper Michigan. Nearly 40 specialists are on staff to provide a variety of services and trainings.

Category: 2, 11, 14

Contact: John Casper

Proud Member of WSC

WISCONSIN MANUFACTURERS & COMMERCE (WMC)

501 East Washington Avenue
Madison, WI 53703
Phone: (608) 258-3400
Email: mwipperman@wmc.org

www.wmc.org

Wisconsin Manufacturers & Commerce (WMC) is the largest and most influential business association in the state, working to make Wisconsin the best place in the nation to do business. We are the state chamber of commerce, state manufacturers' association and state safety council. WMC is also affiliated with WMC Foundation, which runs programs including the Future Wisconsin Project and Wisconsin Business World. WMC is proud to have been serving as Wisconsin's business voice since 1911, representing over 3,800 member companies, spanning all sectors of the economy.

Category: 15

Contact: Mallory Wipperman



WISCONSIN SAFETY COUNCIL (WSC)

501 East Washington Avenue
Madison, WI 53703
Phone: (608) 258-3400
Email: wsc@wisafetycouncil.org

www.wisafetycouncil.org

Wisconsin Safety Council is the state's leading provider of safety training and products, serving members of all sizes and every sector of the economy. The organization provides scheduled training programs across Wisconsin, in addition to private, customized training for your individual company. It is also your number one resources for safety products ranging from first aid training materials to emergency defibrillators. WSC is the official state chapter of the National Safety Council and is a proud program of Wisconsin Manufacturers & Commerce (WMC).

We offer safety services including Confined Space Assessments, Facility Safety Inspections, Job Description Development, JSA Development, Safety Manager Contract Services, Safety & Health Program Development and more! Our mission is to make the state the safest place to live, work and play. It champions this mission through more than 100 safety training programs each year, in addition to its Annual Conference. Additionally, Wisconsin Safety Council provides members with private consulting, training and safety resources. Together, with its members, WSC will accomplish its goal of ending preventable deaths in our lifetime.

Category: 2, 12, 13

Contact: Stephanie Blumer

HOST



COMMITMENT TO SAFETY PARTNERS



2020 CONFERENCE SPONSORS

PLATINUM SPONSOR



ELITE SPONSORS



PREMIUM SPONSORS



DELUXE SPONSORS



SELECT SPONSOR



WISCONSIN SAFETY HALL OF FAME & LIFETIME ACHIEVEMENT AWARD

26th Annual

WISCONSIN

CORPORATE SAFETY *Awards*

Wisconsin Safety Council is proud to recognize companies each year for their dedication to keeping workers safe. In its 26th year, the Wisconsin Corporate Safety Awards honor the state's top companies when it comes to worker safety statistics and the implementation of leading safety programs.

WISCONSIN SAFETY HALL OF FAME

WSC established the Wisconsin Safety Hall of Fame to recognize high achievement and encourage progress toward a safer and healthier Wisconsin. It symbolizes the Council's commitment to safety and health. The recipient is a chief executive officer (CEO), president, or other high-level operating official of an organization that has distinguished itself over a period of years for outstanding achievements in workplace and off-the-job safety and health, community service, environmental stewardship, and responsible citizenship.



2020 Recipient

KIM BASSETT
PRESIDENT/CEO, BASSETT MECHANICAL

As President & CEO, Kim focuses on developing the company's short and long-term strategy, managing overall operations, lean oversight, establishing the culture and leading the company to safely achieve its vision. She joined the company in 1996 as a maintenance sales representative, became President and Chief Operating Officer in 2007 and CEO in 2009.

Bassett Mechanical believes it is important to not only track incident rates and other lagging indicators, but it is also to look at leading indicators. To do this, the company has implemented a behavior-based safety program that rewards safe actions and continuous improvement. The safety and health of employees is not only the top priority in the workplace, but everywhere else, too. Bassett Mechanical requires all company-owned cell phones to have a "do not disturb" function turned on when driving and encourages healthy lifestyles by providing wellness challenges, health club reimbursements, self-funded insurance programs, free weekly fruit delivery and discounts on well-balanced food onsite, among other programs.

SAFETY LIFETIME ACHIEVEMENT AWARD

WSC's Lifetime Achievement Award recognizes individuals for a lifetime of commitment to improving the safety and health of Wisconsin and America's workers. Their passion for safety, extraordinary work ethic and integrity will be of great inspiration in the years to come.

2020 Recipient

LESLIE PTAK
RETIRED, OCCUPATIONAL HEALTH AND SAFETY ADMINISTRATION

Leslie Ptak is being honored with the organization's Lifetime Achievement Award for her dedication, commitment and years of service to the safety industry. Ptak spent her entire career with the Occupational Health and Safety Administration. She began as a summer intern and was later hired as a full-time industrial hygiene compliance officer at the Wilkes-Barre, Pennsylvania area office. Her more than 30-year career also included stops in California, Illinois and eventually Wisconsin serving in both enforcement and compliance assistance roles. Ptak holds a Bachelor of Science degree in Environmental Health Sciences and Industrial Hygiene from Illinois State University and retired from OSHA earlier this year. Over her career that spanned six presidential administrations, Ptak oversaw the rollout of many vital OSHA standards and was part of the OSHA team that went to the World Trade Center after 9/11 to implement a safety plan for workers who had to enter the site. Ptak also served on the WSC Conference Planning and Occupational Safety committees for numerous years.

WISCONSIN CORPORATE SAFETY AWARDS

The Wisconsin Safety Council and the Department of Workforce Development are pleased to celebrate the finalists for the 26th Annual Wisconsin Corporate Safety Award competition. Thirteen of these leading Wisconsin companies are being honored for the Wisconsin Corporate Safety Awards. Our awards are given based on the size of the business (number of employees/hours) and type of business, as defined by NAICS code. Nominees must be headquartered in Wisconsin, or have significant management presence in the state. The achievers are selected from these finalists by an independent panel of 33 judges who are safety, health, or insurance professionals.

CONGRATULATIONS TO THE WINNERS!

Manufacturing – Category A (size)

Oshkosh Defense, LLC – 20th Avenue (Category A | Size 1)
Agropur, Little Chute (Category A | Size 2)
Teel Plastics, Inc. (Category A | Size 3)
Rice Lake Weighing Systems (Category A | Size 4)
InSinkErator (Category A | Size 5)

Agricultural, Forestry, Transportation, Mining & Utilities – Category B (size)

Viking Gas Transmission (Category B | Size 1)
NextEra Energy – Point Beach Nuclear Plant (Category B | Size 2)

Construction – Category C (size)

Lakehead Painting Company, Inc. (Category C | Size 1)
Bassett Mechanical (Category C | Size 2)
Tweet/Garot Mechanical, Inc. (Category C | Size 3)

Other – Category D (size)

RGL Logistics (Category D | Size 1)
RGL Specialty, Inc. (Category D | Size 2)
Colony Brands (Category D | Size 3)

QUALIFIED CSA FINALISTS

ABB Inc., New Berlin
Agropur, Little Chute
Agropur, Luxemburg
American Packaging Corporation, Columbus
Animix, LLC, Juneau
Balestrieri Environmental, Elkhorn
Bassett Mechanical, Kaukauna
Benson Electric Company, Superior
C.D. Smith Construction, Fond du Lac
Cardinal FG – Menomonie, Menomonie
Cintas Corporation, Milwaukee
Colony Brands Inc., Monroe
Derco Aerospace Inc., Milwaukee
Doral Corporation, Milwaukee
Exact Sciences, Madison
Fincantieri Marinette Marine, Marinette
First Supply LLC, Madison
Fitesa, Green Bay
Flint Hills Resources, Milwaukee
Foth & Van Dyke, LLC, De Pere
General Heating and Air Conditioning, Madison
Green Bay Dressed Beef – East River,
Green Bay
GSM Transportation, Janesville
Howard Immel Inc., Green Bay

InSinkErator, Racine
ITU AbsorbTech, Inc., New Berlin
J. F. Ahern Co., Fond du Lac
JP Cullen, Janesville
Komatsu Mining Corp., Milwaukee
Kruger Family Industries, Portage
KS Kolbenschmidt US, Inc., Marinette
Lakehead Painting Company, Inc., Superior
Madison Gas and Electric Company, Madison
Merjent, Inc., Appleton
Nelson and Pade, Inc., Montello
NextEra Energy Point Beach Nuclear Plant,
Two Rivers
Nucor Cold Finish Wisconsin Inc., Oak Creek
Oerlikon, Mequon
Oshkosh Defense, LLC – 20th Avenue, Oshkosh
Oshkosh Defense, LLC – E-Coat Facility,
Oshkosh
Oshkosh Defense, LLC – North Plant, Oshkosh
Oshkosh Defense, LLC – Oakwood Facility,
Oshkosh
Oshkosh Defense, LLC – West Plant, Oshkosh
Penda, Portage
Pierce Manufacturing – Assembly Plant, Appleton

Pierce Manufacturing – Industrial Park Plant,
Appleton
Provident Nutraceuticals a division of Ortho
Molecular Products, Stevens Point
R&L Spring Company, Lake Geneva
RGL Logistics, Neenah, Green Bay
RGL Specialty, Inc., Green Bay
Rice Lake Weighing Systems, Rice Lake
Sani-Matic, Sun Prairie
Saputo (Black Creek), Black Creek
Server Products Incorporated, Richfield
Superior Silica Sands, Barron
Teel Plastics, Inc., Baraboo
Tweet/Garot Mechanical, Inc., De Pere
United Wisconsin Grain Producers, LLC,
Friesland
Universal Die & Stampings, Prairie du Sac
Viking Gas Transmission, Angus
VJS Construction Services, Pewaukee
Vogel Bros. Building Co., Madison
Vortex Tool Company, Schofield
WalzCraft Ind., La Crosse
Wausau Window & Wall Systems, Wausau
Wisconsin Lifting Specialists, Inc., Milwaukee
Xymox Technologies, Inc., Milwaukee

THANK YOU TO OUR CORPORATE SAFETY AWARD SPONSORS



WISCONSIN CORPORATE SAFETY AWARDS

OSHKOSH DEFENSE, LLC - 20TH AVENUE

Oshkosh Defense delivers leading-edge tactical wheeled vehicles and life cycle sustainment services to military and security forces around the globe. For over 100 years, Oshkosh has designed, tested and manufactured a robust portfolio of heavy, medium, light and highly protected military vehicles and technologies to support the U.S. Armed Forces and its allies. The 20th Avenue location has three sections: tooling, traffic/shipping and logistics.

In 2019, the 20th Avenue location team had many significant accomplishments. The most significant was the improvement in near miss reporting and low recordable incidents. The 20th location is a small location that has a few incidents a year. Increasing their near miss reporting by 100% helped drive down their total case incident rate, which made them eligible for their VPP audit. The activities, audits and inspections the team completed helped support a great 2019, resulting in a full year with no lost times and one recordable injury.



Category A1



Location
Oshkosh, WI

Established
1917

Website
www.oshkoshdefense.com

Contact
Matt Overesch
Sr. Segment Safety
Manager
(920) 267-1590

AGROPUR INC - LITTLE CHUTE

Agropur inc – Little Chute, located in northeast Wisconsin, is a worldwide supplier of award-winning stick mozzarella cheese and squeaky fresh cheese curds. The facility includes Simon's Cheese Store, which makes and markets a variety of delicious foods, snacks and treats, and offers a variety of local Wisconsin products. The 120 employees at the facility continue the rich tradition in Wisconsin cheese making, supporting local Wisconsin dairy farms as it processes 350,000,000 pounds of milk into 50,000,000 pounds of award-winning cheeses. The facility has been part of the Little Chute community and the larger Fox River Valley for over 70 years, and takes pride in a safe working environment – holding safety as a core value. Management is heavily engaged and lives safety through all aspects of the organization, believing that safety must be a focus 24 hours per day, 7 days per week, with the mindset that continuous improvement is the only way to keep reducing incident rates.



Category A2



Location
Little Chute, WI

Established
1940

Website
www.agropur.com

Contact
Riley Van Thiel
Regional Safety
Manager
(920) 944-0954

TEEL PLASTICS, INC.

Teel Plastics started as Insemikit Company in 1951, producing tools and implements used in the emerging livestock artificial insemination industry. This business foresaw a need for plastic tubing to replace glass insemination tubes. In 1958 the name was changed to Teel Plastics, Inc. and production began on liquidproof sampling bags used in laboratories around the world, as well as custom extruded plastic tubing and injection molded plastic parts. Through its commitment to meet customer and employee needs, the company has grown significantly through the years, now including technology-driven products for the healthcare sector, industrial and consumer products, personal hygiene products, medical packaging and device components, water filtration products, automotive components, cosmetics and pencils. Teel currently serves their world-wide customer base with three manufacturing facilities and 250 employees. Teel's employees incorporate safety into every aspect of their culture. With the launch of the Safety Steering team and subteams, Teel took a large risk to make a substantial change in the structure of how they approach safety improvements. Creating subteams including ergonomic safety, indoor and outdoor building safety, security and environmental issues, hand injuries and safety marketing – the new format has facilitated inclusion in shifts and increased engagement in employees across the board.



Category A3



Location
Baraboo, WI

Established
1951

Website
www.teel.com

Contact
DeeAnna Deane
HR Manager -
Training Specialist
(608) 355-4574

RICE LAKE WEIGHING SYSTEMS

Rice Lake Weighing Systems is a family-owned company, established in 1946, that is an international leader in the manufacturing and distribution of industrial scales and scale equipment. They apply cutting-edge research and design to create products that are the future of the weighing industry. Headquartered in Rice Lake, WI, they have operations worldwide with more than 1,200 employees. In 2019, Rice Lake Weighing Systems vastly improved their overall safety record with a strong focus on communication and employee engagement, including the addition of impactful "story boards." A root cause analysis is conducted after every OSHA recordable injury and necessary improvements are made. A storyboard is then developed that illustrates the situation before and after, and any actions taken by management and employees. Supervisors deliver these storyboard communications to their team(s), explaining the incident, positive changes made, and how everyone can prevent future injuries.



Category A4



Location
Rice Lake, WI

Established
1946

Website
www.ricelake.com

Contact
Greg Martin
EHS Manager
(715) 434-5186

INSINKERATOR

Headquartered in Racine, InSinkErator® (ISE) is a business unit of Emerson and is the world's largest manufacturer of garbage disposals and instant hot water dispensers for home and commercial use, employing nearly 1,300 Wisconsinites. InSinkErator invented the disposal in 1927, and disposal technology has advanced dramatically since then, culminating with the high-performance Evolution Series®, which features advanced sound, grind, anti-jam and anti-vibration technologies. ISE has changed the culture of their incident reporting by focusing on the human aspect of safety. Safety is focused on topics that employees can not only use at work but also at home with their families. Through this culture change and safety focus, ISE has greatly decreased the TRR over the past 5 years. The TRR from FY18 to FY19 was reduced 38%. There have been zero recordable incidents in FY 2020.



Category A5



Location
Racine, WI

Established
1927

Website
www.insinkerator.emerson.com

Contact
Alexis Marzullo
Global EHS Director
(262) 551-5113

VIKING GAS TRANSMISSION

Viking Gas Transmission Company (VGT), a subsidiary of ONEOK Inc., operates over 600 miles of natural gas transmission mainline starting at the Canadian/Minnesota border and ending in Marshfield, Wisconsin. Viking has 43 employees that operate a 24" mainline, several smaller lateral lines, 74 meter stations, and eight compressor stations which are strategically located along the pipeline route to provide reliable service to their customers. Throughout its history, employees have worked safely with the volatile characteristics of natural gas in a wide variety of weather and travel conditions native to the Wisconsin climate. The outstanding feature of their safety culture is formed in their commitment to "Being Our Sister's and Brother's Keeper," which has transcended across 5 ownership changes and over 59 years of operation. In 2019, all VGT employees throughout Minnesota and Wisconsin achieved safety excellence with statistics of zero OSHA recordable injuries, zero recordable illnesses and zero first aid events while working 4,648,320 minutes.



Category B1



Location
Osceola, WI

Established
1960

Website
www.oneok.com/vgt

Contact
David Gunderson
S&H Coordinator
(218) 745-5082

NEXTERA ENERGY - POINT BEACH NUCLEAR PLANT

Point Beach Nuclear Power Plant is a dual unit 1,200 megawatt nuclear power generating station located on the shores of Lake Michigan, owned and operated by NextEra Energy Resources, LLC, a subsidiary of NextEra Energy, Inc. Point Beach has been recognized by OSHA's Voluntary Protection Program (VPP) as a Star worksite since 2011, and recently completed and passed a five-year VPP Recertification audit which provided continued recognition as a VPP Star Worksite. Point Beach is rated exemplary by the Institute of Nuclear Power Operators (INPO), the governing body for all nuclear facilities, and recognized as a national and world leader for nuclear facilities in industrial safety performance. They hold the nuclear industry record for consecutive outages without an OSHA event.



Category B2



Location
Two Rivers, WI

Established
1970

Website
www.nexteraenergy.com

Contact
Bob Wolf
Safety & Health
Manager
(920) 755-6842

WISCONSIN CORPORATE SAFETY AWARDS

LAKEHEAD PAINTING COMPANY, INC.

Founded in 1965, Lakehead Painting Company is an industrial and commercial painting contractor that employs approximately 35 union and 5 management employees in the construction industry. The majority of Lakehead's work is performed in the oil and gas industry with a focus on painting, abrasive blasting and fiber glassing of crude oil storage tanks. Lakehead believes in and promotes a 24/7 safety philosophy, which focuses on employees being safe at work, at home and on the road. The company takes great pride in its safety history, averaging one recordable injury every 5 years and reaching a goal of zero recordable injuries six out of the last seven years. Lakehead achieved two major accomplishments in 2019, including a decrease in their Experience Modification Rating (EMR) (1.05 in 2010 to .64 currently) and zero recordable injuries.



Category C1



Location
Superior, WI

Established
1965

Website
www.lakeheadpainting.com

Contact
Ryan Vieau
Vice President -
Contract
(218) 349-7399

BASSETT MECHANICAL

Bassett Mechanical, a third generation family business employing over 400 associates, provides custom-built mechanical contracting, metal fabricating, and preventative maintenance solutions to customers throughout the United States and the world. Their offerings include mechanical engineering and design, repair and service for industrial refrigeration, HVAC, industrial ventilation, metal fabrication, plumbing and piping, laser cutting, testing and balancing and preventive maintenance – in addition, they provide maintenance services regionally, mechanical contracting services nationally and ship fabrications globally. Bassett's safety program aims to continually improve and better protect associates and customers through a collaborative approach. Employees are invited to continuously search for, report, and follow up on safety improvement opportunities and report any near misses. Each of these opportunities is reviewed by committee, tracked in a trending matrix, and followed up with until an acceptable solution is enacted. This, in combination with their 1,145 behavior-based safety observations, including over 18,500 observation points, has greatly impacted their industry leading safety record. Bassett finished the year with a Total Recordable Incident Rate (TRIR) and Lost Time Incident Rate (LTIR) well below industry averages.



Category C2



Location
Kaukauna, WI

Established
1936

Website
www.bassettmechanical.com

Contact
Cory Goldschmidt
Director of Safety
(920) 462-1816

TWEET/GAROT MECHANICAL, INC.

Tweet/Garot Mechanical, Inc. is a mechanical contracting company with office and fabrication facilities in De Pere, Wrightstown, and Wisconsin Rapids. Tweet/Garot employs over 520 people, including steamfitters, plumbers, sheet metal workers, service technicians, building automation programmers, administrative staff and project management personnel. Their business involves the design, engineering, fabrication and installation of commercial and industrial plumbing, heating, ventilation, and air-conditioning systems, process and boiler piping, as well as the design, manufacturing and installation of food processing equipment. Tweet/Garot also provides customers with a full range of service and maintenance for HVAC, plumbing and controls with their 40 skilled technicians. Even though Tweet/Garot is typically a sub-contractor on construction projects, they have found ways to unite as "one company" around safety and lead entire jobsites in safety from an auxiliary position. While safety is valued from the top-down, employees are equally empowered to push safety from the bottom up, holding management accountable. Tweet/Garot was the first Wisconsin-based mechanical contractor to participate 100% in substance abuse testing for both union and non-union employees, and continues to lead the industry by performing testing with more union employees than any other contractor in the state-wide program. Tweet/Garot has added a Safety Advocate Program to enhance safety training and supervision on job sites and in their shops. In addition, they have implemented a company policy prohibiting the use of hand-held mobile phones while driving, instituted annual DMV record checks for employees with access to any company vehicles, and use a GPS-tracking and recording system to assure the safe use of company-owned vehicles.



Category C3



Location
De Pere, WI

Established
1897

Website
www.tweetgarot.com

Contact
Bryan Zarembo
Director of Safety &
Risk Management
(920) 498-0400

RGL LOGISTICS - NEENAH

RGL Logistics is a full-service transportation management, warehousing and distribution company headquartered in Green Bay. RGL specializes in developing tailored solutions for customer's supply chain needs with capabilities that include domestic transportation management, warehousing and DC operations, in-plant material handling, co-packing and logistics consulting. RGL - Neenah division provides material handling, distribution services, and contract packaging. RGL - Neenah's behavioral based safety program continues to evolve as employees improve their observations, communication and analytical skills. RGL - Neenah strives to be aware of leading indicators that predict areas needing attention before a safety incident occurs. They work to define an incident and develop an incentive plan that rewards employees for increasing their situational awareness, building strong working team relationships and making commitment to safe behaviors a way of life.



Category D1



Location
Neenah, WI

Established
1903

Website
www.rgllogistics.com

Contact
Carol Jamrosz
VP Risk Manager
(920) 884-1220

RGL SPECIALTY SERVICES, LLC

RGL Specialty Services, LLC, another division of RGL Logistics, provides in-plant material handling, distribution services, contract packaging, order fulfillment and transportation management for their customers. The in-plant division provides services to production line supply, raw materials and finished goods areas within their customers' facilities with RGL's equipment and employees. Their Co-Pack division provides contract packaging and order fulfillment with direct ship to customers. And, transportation management provides North American transportation solutions for customers. The company's overarching vision is that "every day, our people go home safe, healthy and fulfilled." Work Safe, Live Safe is their highest value. Other core company values with an important impact on RGL's safety include: Treat Others with Dignity and Respect, Act with Honesty and Integrity, Continuously Improve and Be Accountable. Their behavioral based safety program continues to evolve as employees improve observations, communication and analytical skills to hold each other accountable.



Category D2



Location
Green Bay, WI

Established
2004

Website
www.rgllogistics.com

Contact
Carol Jamrosz
VP Risk Manager
(920) 884-1220

COLONY BRANDS

Colony Brands, Inc. is comprised of several multi-channel retail brands, numerous operational support companies as well as a portfolio of business organizations. The enterprise is headquartered in Monroe, Wisconsin with several locations throughout the Midwest. The company employs more than 6,000 people annually with careers stretching from brand managers to accountants, pastry chefs to programmers, and lab technicians to pilots. Collectively, Colony Brand's purpose is to empower the employees of their companies, their customers, and those in the communities they call home. They do this through three areas of focus: companies and brands, customer enrichment and community support. Safety and health success is due to their increased focus on safety awareness on and off the job, wellness activities, accountability programs, and a true commitment at all levels within the organization. In 2019, Colony Brands achieved the second lowest incident rate in the history of the company and the lowest lost time incident rate. Involving employees in the safety process is a major factor to their safety success. This approach provides employees a way to demonstrate and share their commitment while building pride, ownership and skills not only in safety but in their daily work activities.



Category D3



Location
Monroe, WI

Established
1926

Website
www.colonybrands.com

Contact
Dan Dilley
Safety & Security
Manager
(608) 558-7450