

**Wisconsin Safety Council  
83rd Annual Conference**

**Exhibitor Prospectus**

**April 14-16, 2025**

# CONFERENCE INFORMATION

## Exposition

The Expo Hall will be open Tuesday (9:00 am - 4:00 pm) and Wednesday (8:30 am - 1:30 pm), April 15-16, 2025. **Booth set up time will be on Monday, April 14 (12:00 pm - 7:30 pm) and Tuesday, April 15 (7:00 - 8:45 am). Carry-in only for Tuesday.**

## Why Exhibit?

Our conference is one of the Midwest's largest gatherings of safety, human resources, and health professionals. It is the perfect opportunity for you to showcase your innovative products and services to decision makers.

## Expected Attendance

Each year, more than 1,200 attendees register for the conference.

## Exhibitor Website

For up to date information regarding all things exhibitors, visit our website:

[www.wisafetycouncil.org/events/annual-conference/exhibitor-information](http://www.wisafetycouncil.org/events/annual-conference/exhibitor-information)

## Exhibit Contact

Stephanie Stevens, Exhibitor Coordinator, Wisconsin Safety Council • 501 E Washington Ave., Madison, WI 53703  
Phone: 608.661.6931 or 608.258.3400 • Email: [sstevens@wisafetycouncil.org](mailto:sstevens@wisafetycouncil.org) • [www.wisafetycouncil.org](http://www.wisafetycouncil.org)

- Online Registration
- Schedules
- Floor Plans and Available Booths
- Current Booth Assignments
- Lodging Information

# EXHIBITOR SCHEDULE\*

## Monday, April 14, 2025

Exhibitor Move-in/Registration .....12:00 - 7:30 pm  
Conference Attendee Registration .....3:00 - 7:00 pm

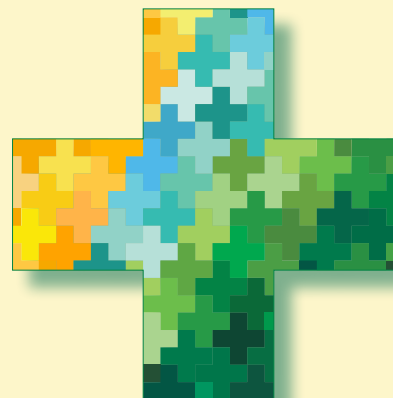
## Tuesday, April 15, 2025

Exhibitor Move-in/Registration (**carry-in only**) .....7:00 - 8:45 am  
Expo Hall Hours .....9:00 am - 4:00 pm  
Expo Hall Power Hour.....9:15 - 10:00 am  
Buffet Lunch for Exhibitors .....11:30 am  
Expo Hall Power Hour.....12:15 - 1:30 pm  
Conference Reception for All.....4:00 - 5:00 pm

## Wednesday, April 16, 2025

Expo Hall Hours .....8:30 am - 1:30 pm  
Expo Hall Power Hour.....8:30 - 9:30 am  
Buffet Lunch for Exhibitors .....11:30 am  
Exhibitor Move-out - NO EARLY TEAR DOWN .....1:30 - 4:30 pm

*\*Schedule subject to change*



# EXHIBITOR OPPORTUNITIES

## Exhibitor Package

The Exhibitor Package Includes:

### Booth Materials

- 8' deep x 10' wide inside Expo Hall
- Pipe, drape and 7" x 44" identification sign
- 8' skirted table, two chairs and waste basket
- Carpeted Expo Hall
- 24-hour Expo Hall security

### Marketing Support

- Pre- and post-conference attendee mailing lists (emailed to booth contact)
- Exhibitor name in the Conference program booklet
- Extended networking hours at Conference reception
- Exhibitor listed on Conference website with a link to your website, [www.wisafetycouncil.org](http://www.wisafetycouncil.org)

### Staff Representative(s) Receive

- **Three** representatives allowed per booth (Note: If you need an allowance for additional booth representatives, please contact Stephanie Stevens for pricing and details, [sstevens@wisafetycouncil.org](mailto:sstevens@wisafetycouncil.org))
- **Access to General Sessions.**
- **Access to Breakout Sessions.**
- **Lunches:** Up to three lunches per booth on Tuesday and Wednesday

## Official Decorator & Furniture/Decorations

A Valley Expo & Displays Service Kit will be emailed to each exhibitor in January. The kit includes information on shipping, ordering additional furniture, labor, electricity and rental display units.

Such additional items are rented by the exhibitor directly from our contractor, and not included in the exhibitor rental fee paid to Wisconsin Safety Council.

## Booth Assignments, Selection and Pricing

Booth availability is based on first come first serve. FULL credit card payment is required at the time of the reservation.

<u>Booth Type</u>	<u>Price</u>
Premium Booths (Red)	\$1,900
Deluxe Booths (Yellow)	\$1,600
Standard Booths (Green)	\$1,400

## Conference Location/Lodging Information

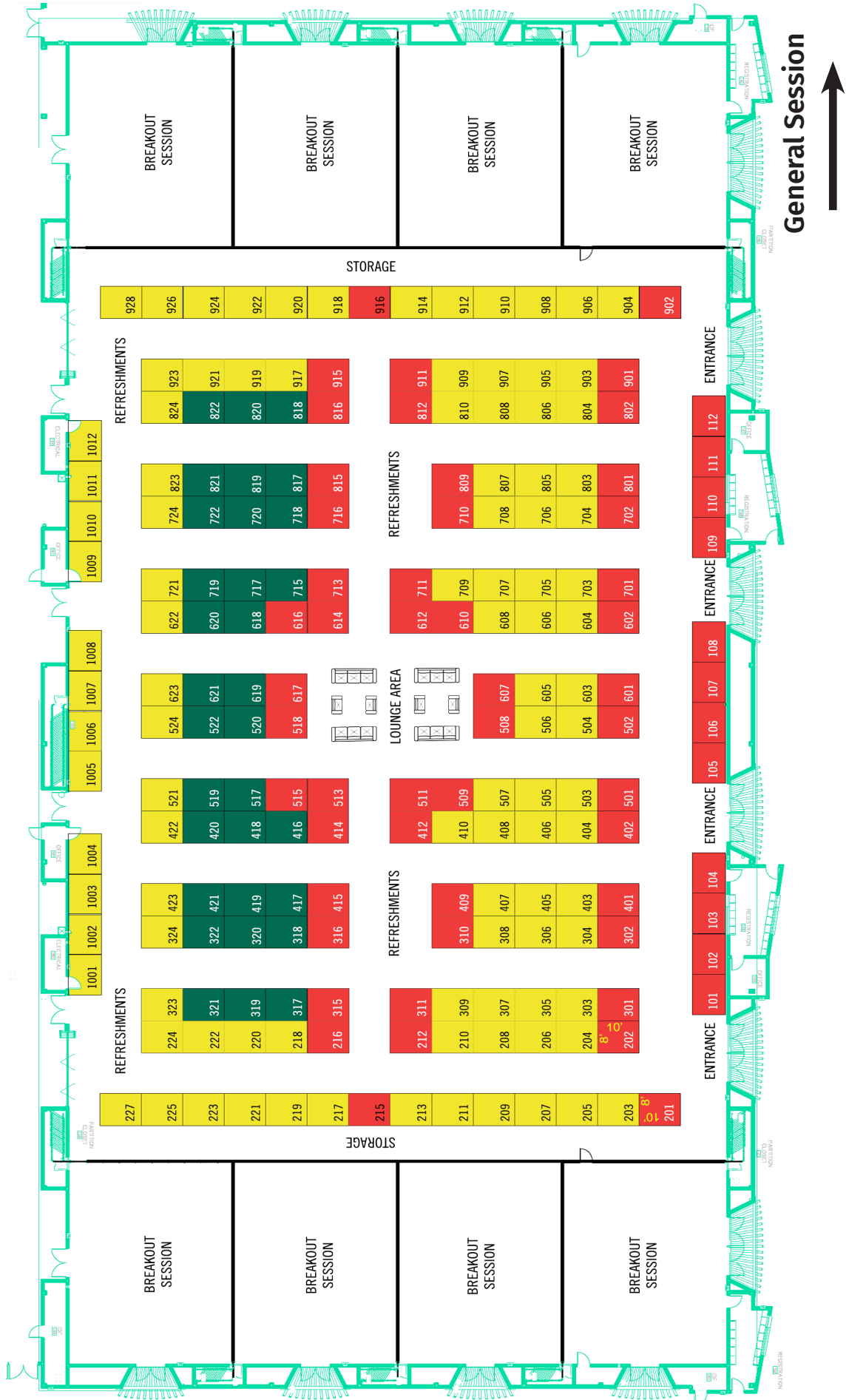
Kalahari Resort & Conference Center  
1305 Kalahari Drive  
Wisconsin Dells, WI 53965  
Phone: 877.525.2427  
[www.kalahariresorts.com/wi](http://www.kalahariresorts.com/wi)

Visit [www.wisafetycouncil.org](http://www.wisafetycouncil.org) for hotel reservation information.



# EXHIBITOR FLOOR PLAN

For the most current information on booth availability and exhibitors, please visit [www.wisafetycouncil.org](http://www.wisafetycouncil.org) or call Stephanie Stevens at the Wisconsin Safety Council, 608.661.6931 or [sstevens@wisafetycouncil.org](mailto:ssstevens@wisafetycouncil.org)



Premium Booth (Red) = \$1,900      Deluxe Booth (Yellow) = \$1,600      Standard Booth (Green) = \$1,400